



5 The Winding
Dinnington





5 The Winding, Dinnington, Newcastle upon Tyne, NE13 7LR

Guide Price £179,950

A well-maintained, two-bedroom semi-detached bungalow positioned in a lovely, quiet cul de sac in Dinnington village, benefiting from a long driveway with parking for two cars, a single garage and private rear garden. The bungalow, in need of some updating, has uPVC double glazed windows, air ducted gas central heating., and hot water provided by a Baxi Potterton main multipoint room sealed fan assisted water heater.

L-shaped entrance hallway | Generous sitting room with bay window to the front | Fitted kitchen overlooking the rear garden with a door giving access to a garage | Two double bedrooms | Bathroom/wc | Large garage with electric roller door | Driveway | Gardens to both the front and rear - the rear garden is paved with raised beds for easy maintenance | NO UPWARD CHAIN

The bungalow is well located for easy access to the local amenities in Dinnington Village, including village shops, restaurants and public houses, as well as Newcastle International Airport, Newcastle and Ponteland village.

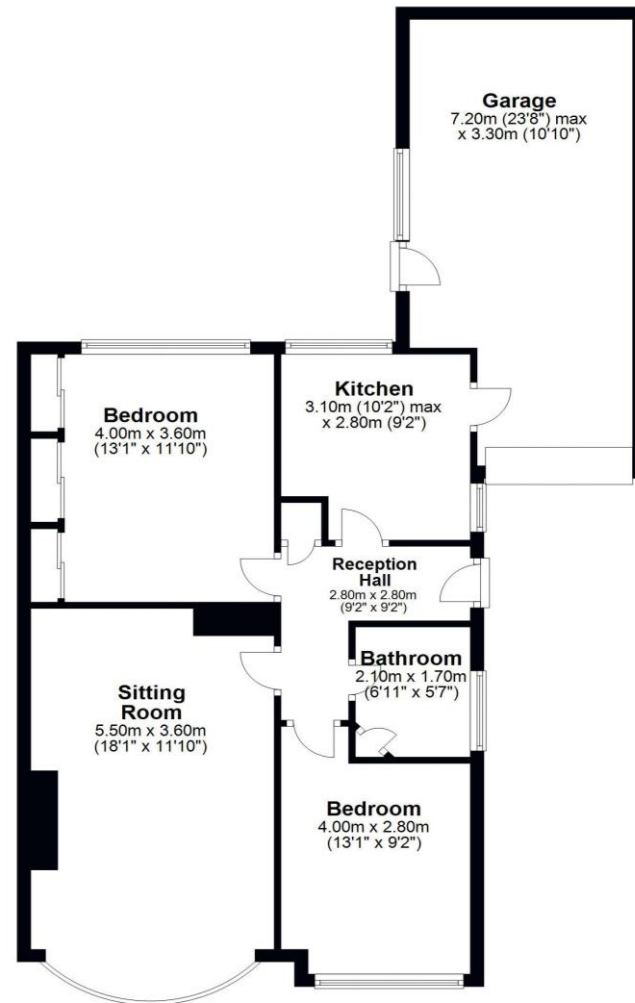
Council Tax: Band C | EPC Rating: D





Ground Floor

Approx. 86.2 sq. metres (927.6 sq. feet)



Total area: approx. 86.2 sq. metres (927.6 sq. feet)

5 The Winding, Dinnington

All enquiries to our Ponteland Office | Coates Institute, Main Street, Ponteland, Newcastle upon Tyne NE20 9NH

T: 01661 823951 | www.sandersonyoung.co.uk

