



14 Warwick Court
Kingston Park





14 Warwick Court, Kingston Park, Newcastle Upon Tyne, Tyne And Wear, NE3 2YS

Guide Price £235,000

A well presented three bedroom, detached bungalow located to the head of this quiet cul de sac in Kingston Park, with easy access to Windsor Way, the A1 and Gosforth. The property has a long block paved driveway for several cars, an attached single garage, generous lawned gardens with an east/west facing aspect, and benefits from gas central heating and uPVC double glazing.

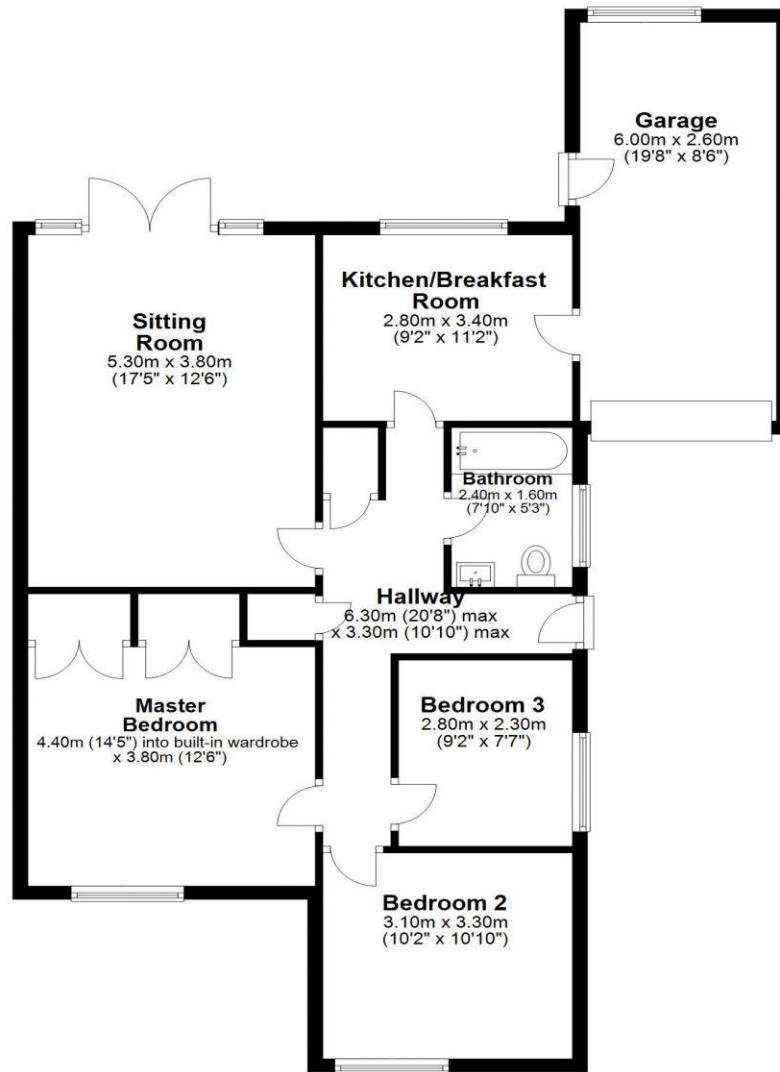
Hallway | Lovely sitting room with French doors to the rear garden | Family kitchen/breakfast room fitted with a range of cream cabinets and integrated appliances | Master bedroom with fitted wardrobes | Two further bedrooms | Contemporary family bathroom, with bath with shower over | Single attached garage with door giving access to the rear garden | Lawned and paved patio terrace to the garden | Block paved driveway The bungalow offers a great opportunity for a variety of buyers, including family buyers and those looking to downsize, and is ideally placed for easy access to the Kingston Park Primary School, the nearby Metro station, local shopping centre, and the Falcons Rugby Club.

Tenure: Freehold | Council Tax: Band C | EPC: C





Ground Floor
Approx. 95.3 sq. metres (1025.8 sq. feet)



Total area: approx. 95.3 sq. metres (1025.8 sq. feet)
14 Warwick Court, Kingston Park

All enquiries to our Gosforth Office | 95 High Street, Gosforth, Newcastle upon Tyne NE3 4AA

T: 0191 213 0033 | www.sandersonyoung.co.uk

