



**28 Grove Park Oval**  
Gosforth





28 Grove Park Oval, Gosforth, Newcastle upon, NE3 1EG

Guide Price Guide Price £335,000

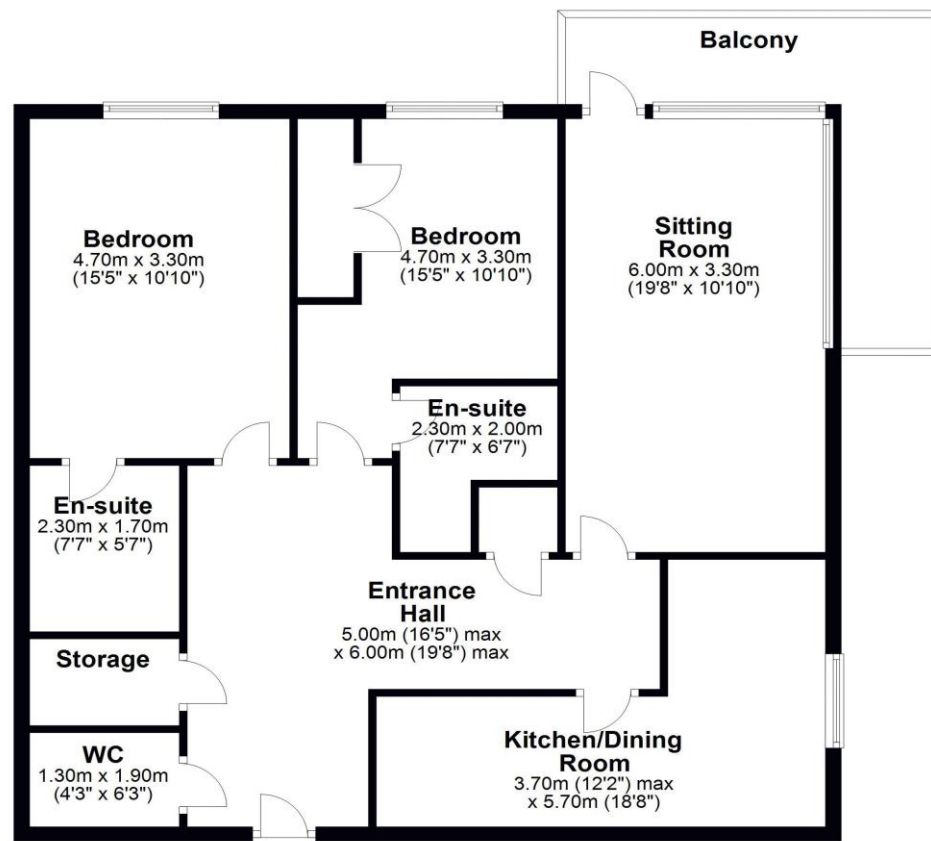
**STYLISH CORNER APARTMENT WITH TWO DOUBLE BEDROOMS, TWO EN-SUITES, GENEROUS CORNER BALCONY, ALLOCATED UNDERGROUND PARKING SPACE, LIFT ACCESS & NO ONWARD CHAIN.** This superb purpose-built apartment is ideally located at the popular Grove Park Oval development, Gosforth. Grove Park Oval, which was originally constructed in 2005 on the former Proctor & Gamble site, is well placed within Gosforth's Conservation Area and offers some of the finest modern apartments within central Gosforth and the city. The development is excellently placed to provide easy access to Gosforth High Street, with its shops, cafes and amenities whilst also being only a short walk to Ilford Road and South Gosforth Metro Stations providing excellent links into Newcastle City Centre and beyond. Boasting in excess of 1,000 sq.ft of internal living space, the accommodation briefly comprises: Communal entrance hall with secure entry phone system and lift and stairs to all floors | Private entrance at the second floor level | Generous entrance hall with guest WC and two store cupboards | Impressive 19ft lounge/diner with dual aspect picture windows and door to the balcony | Private corner balcony with glass balustrades and artificial lawn | 18ft





### Ground Floor

Approx. 99.0 sq. metres (1065.4 sq. feet)



Total area: approx. 99.0 sq. metres (1065.4 sq. feet)  
**28 Grove Park Oval, Gosforth**

All enquiries to our Gosforth Office | 95 High Street, Gosforth, Newcastle upon Tyne NE3 4AA

T: 0191 213 0033 | [www.sandersonyoung.co.uk](http://www.sandersonyoung.co.uk)

