



**26 Bernicia Way**  
Beadnell





26 Bernicia Way, Beadnell, Chathill, Northumberland, NE67 5EJ

Offers Over £399,000

A stylish and immaculately presented three bedroom detached holiday home, occupying a fabulous position within this much sought after coastal development in Beadnell. The 'Fulmar' style house, built by Lindisfarne Homes in 2017/18, enjoys a lovely aspect from the first floor, open plan living area and external south facing balcony over the central green area and towards Beadnell Bay. The contemporary home is finished to a high specification throughout, with a large decked terrace. The property enjoys excellent access to all local facilities and amenities, as well as just a short walk to Beadnell Bay and the beach.

Reception hallway with Amtico flooring | Ground floor master bedroom with built in wardrobe | Ensuite shower room/WC | Two further ground floor double bedrooms, one with a built in wardrobe | Well-appointed family bathroom with a separate shower | First floor | Impressive open plan reception space with vaulted and beamed ceiling and excellent natural light from the floor to ceiling windows and French doors to the south facing balcony, and additional windows and Juliet balcony to the side | Versatile space for living and dining opening to a private balcony, ideal for alfresco dining and entertaining | Stylish fitted kitchen with a central island/breakfast bar and integrated appliances; gas hob, electric oven, combination oven, fridge/freezer, wine cooler and dishwasher | Utility room and first floor WC | Externally - Open plan lawned gardens surround the property with two decked terrace seating areas, an external store room and double width driveway for two cars.

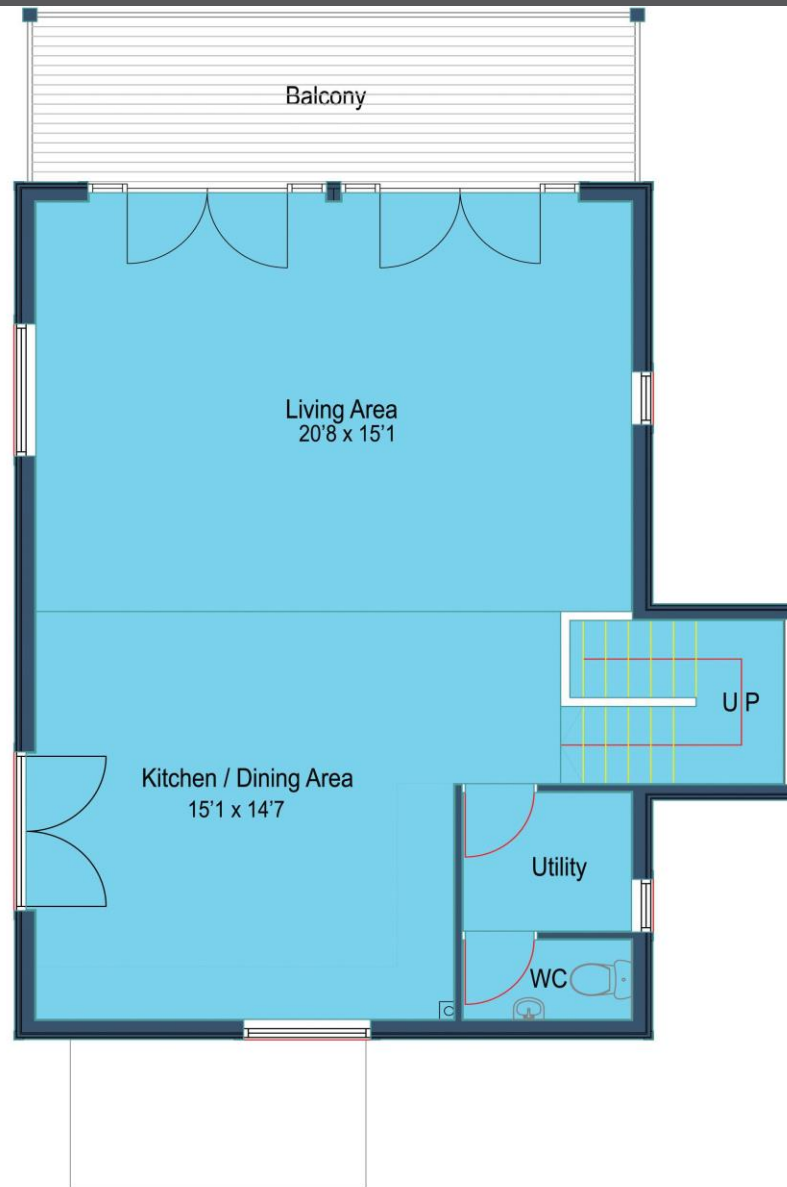
Services: Mains Electric, Water & Drainage | LPG Central Heating | Tenure: Freehold | Council Tax: Band E | EPC: C



















All enquiries to our Alnwick Office | 35 Bondgate Without, Alnwick, Northumberland NE66 1PR

T: 01665 600 170 | [www.sandersonyoung.co.uk](http://www.sandersonyoung.co.uk)

