



rare!

From Sanderson Young



Orchard House
The Green
Wallsend



Orchard House, The Green, Wallsend, Newcastle upon Tyne NE28 7PG

Guide Price £725,000

Orchard House is an impressive six bedroom detached Victorian villa, circa 1890, with excellent period accommodation set over three floors, and set in a lovely mature garden site of approx 1/2 acre in the conservation area of The Green in Wallsend. The superb family home, lived in by the current owners for 30 years, has been extended at ground floor level creating a sitting room, large double bedroom, and shower room/wc, ideal as an annexe for extended family or an elderly relative. The house offers versatile accommodation with four reception rooms, two conservatories and a large kitchen/breakfast room, many with views over the mature and private gardens and retained many period features including decorative ceiling coving and moulding and fireplaces.

Vestibule | Reception hallway | Drawing room | Dining room | Study | Sitting room | Large Conservatory | Kitchen/breakfast room with AGA | Conservatory | First floor | Master bedroom with bespoke cabinets | Dressing room | Ensuite bathroom/wc | Two large double bedrooms | Family bathroom/wc | Second floor | Living room | Double bedroom | Shower room/wc | Mature and private gardens with paved terraced seating areas, and gated access to the rear | Extensive gravel driveway with parking for several cars. Orchard House is ideally well positioned for easy access to the local shops and amenities, as well as the beautiful Wallsend Parks for woodland walks, a cafe, tennis courts, bowling green and excellent children's play area. There are two Metro Stations within walking distance of the house, and the excellent Silverlink Shopping Park a short drive away. There is more information at www.thegreenwallsend.org

Services: Mains electric, gas, water and drainage | Tenure: Freehold | Council Tax: Band F |
Energy Performance Certificate: Rating E

rare! From Sanderson Young



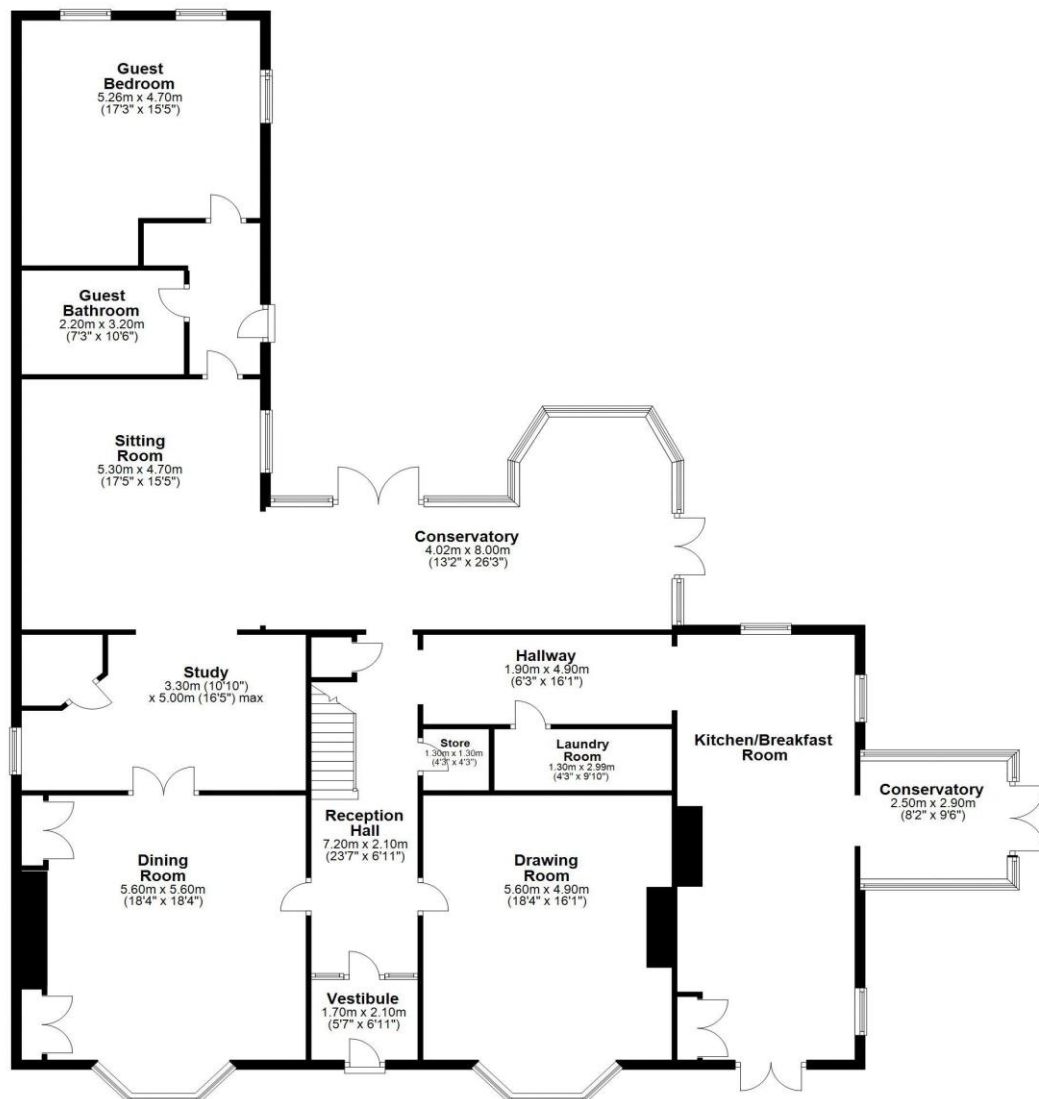




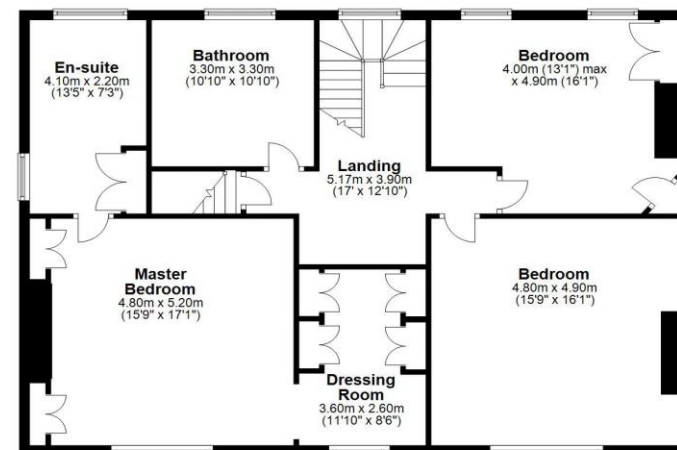




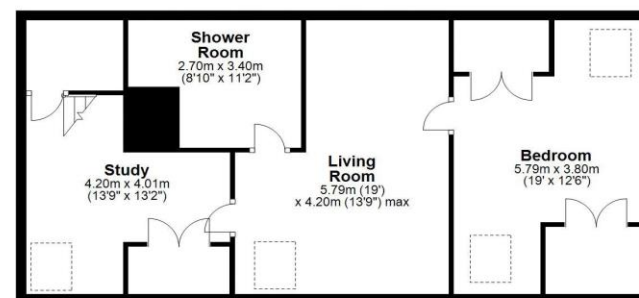
Ground Floor
Approx. 244.3 sq. metres (2630.0 sq. feet)



First Floor
Approx. 115.5 sq. metres (1243.4 sq. feet)



Second Floor
Approx. 70.3 sq. metres (756.3 sq. feet)



Total area: approx. 430.1 sq. metres (4629.7 sq. feet)
Orchard House, The Green, Wallsend



All confidential enquiries to:

Gosforth Office, 95 High Street, Gosforth, Newcastle upon Tyne, NE3 4AA

E: duncan.young@sandersonyoung.co.uk | E: ashleigh.sundin@sandersonyoung.co.uk

T: 01912233500 | www.sandersonyoung.co.uk

rare! From Sanderson Young

