



39 Willoughby Park
Alnwick





39 Willoughby Park, Alnwick, Northumberland, NE66 1ET

Guide Price £319,950

An attractively presented, four bedroom detached family home, occupying a lovely elevated position within this popular residential development constructed by Cussins Homes in 2015. The property enjoys pleasant views from the front over the town to the surrounding countryside with well proportioned accommodation finished to a lovely standard, gardens to front and rear, single garage in a block and parking for two cars. Willoughby Park is ideally positioned within walking distance of the town centre and all central services, amenities and transport links.

Entrance hall with Karndean flooring, stairs to first floor and cloakroom/wc | Well appointed kitchen/dining room fitted with a range of cream shaker style units, incorporating integrated five ring gas hob with stainless steel extractor and splash back., single oven, microwaves, wine cooler, dishwasher and fridge/freezer. The kitchen/dining room has Karndean flooring throughout and double glazed windows to both front and rear elevations | Utility room with access door to the rear garden | Attractive dual aspect lounge which has french door to the rear patio and gardens | To the first floor - Master bedroom with fitted wardrobe | En suite shower room/wc | Two further good sized bedrooms | Single bedroom | Family bathroom/wc including over bath shower | Externally - To the front, steps lead to the front of the property with lawned gardens and paved access path. To the rear is a sunny south facing garden, split across two levels to include generous patio and steps to a lawned area with decking.

Services: Mains Electric, Water, Gas & Drainage | Gas Central Heating | Tenure: Leasehold | Council Tax: Band D | EPC: B

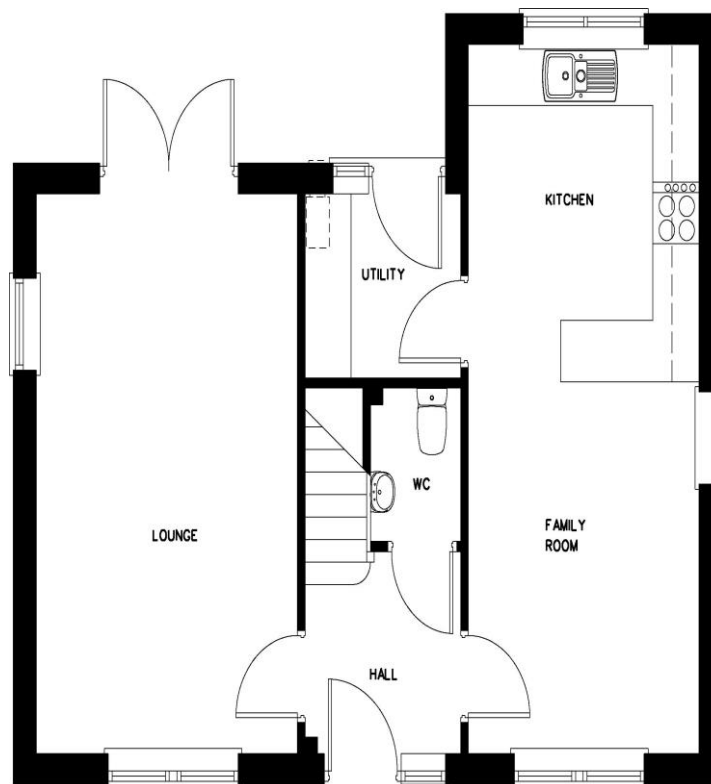






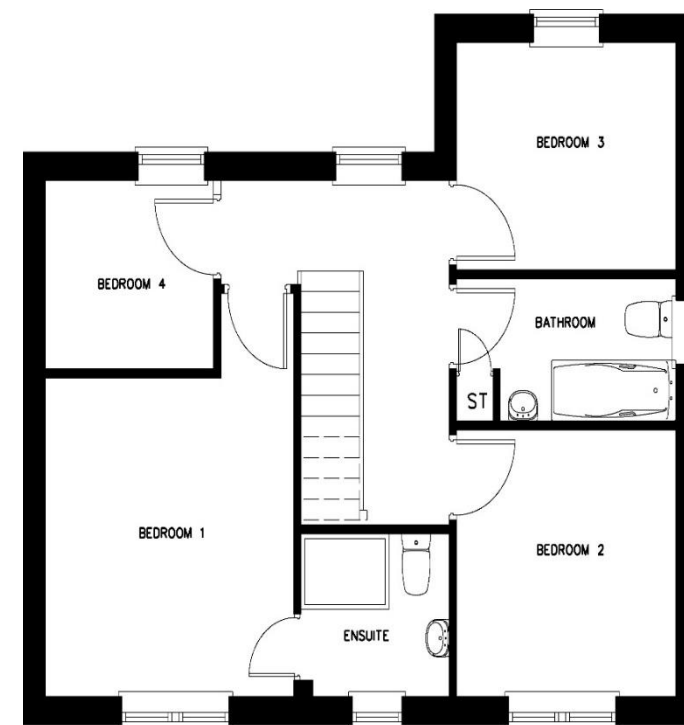


Ground Floor



Kitchen/Dining Room: 22'6" x 9'7" (6.7m x 2.7m)
Utility: 6'0" x 6'5" (1.8m x 1.8m)
Lounge: 17'8" x 18'11" (5.2m x 5.5m)

First Floor



Bedroom 1: 11'2" x 11'0" (3.4m x 3.4m)
Bedroom 2: 9'2" x 9'7" (2.7m x 2.7m)
Bedroom 3: 9'7" x 7'10" (2.7m x 2.1m)
Bedroom 4: 7'6" x 6'5" (2.1m x 1.8m)
Bathroom: 4'11" x 7'6" (1.2m x 2.1m)

Please note: This floorplan is a mirror image of the layout for this property.

All enquiries to our Alnwick Office | 35 Bondgate Without, Alnwick, Northumberland NE66 1PR

T: 01665 600 170 | www.sandersonyoung.co.uk

