



Woodlands
Bradley Hall Farm





Woodlands, Bradley Hall Farm, Wylam, Northumberland NE41 8JP

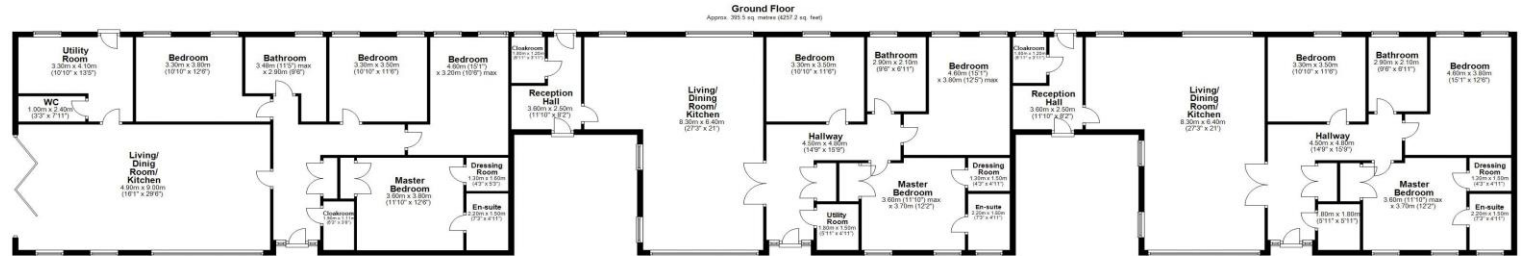
Guide Price £495,000

STYLISH SINGLE STOREY, NEW BUILD CONTEMPORARY HOME - FOUR BEDROOMS, ADJACENT Paddock, AND FABULOUS OPEN ASPECT VIEWS

Woodlands is an impressive new build contemporary home, one of only three in this exclusive Bradley Hall Farm development, with fabulous open aspect rural views, generous lawned gardens and a paddock area, a block paved driveway for several cars and a covered car port. The stylish four bedroom, single storey home has been designed in keeping with the barn conversions of the farm steading, constructed in stone with cedar cladding, with high quality kitchens and bathrooms, oak flooring and internal doors, and excellent natural light from the large picture windows overlooking the gardens. Externally, the property has the largest plot within the development, with formal lawned gardens, an approx. 1.75 acre paddock to the side (Available by separate negotiation) and a block paved driveway.

Reception hallway with built in storage | Cloakroom/wc | Magnificent open plan living/dining room and kitchen | Stylish contemporary kitchen with granite worktops and integrated appliances | Utility room and wc | Master bedroom | Ensuite shower/wc | Three further double bedrooms | Family bathroom/wc | Block paved driveway for several cars | NO UPWARD CHAIN





Total area: approx. 395.5 sq. metres (4267.2 sq. feet)
Bradley Hall Farm, Wylam

All enquiries to our Ponteland Office | Coates Institute, Main Street, Ponteland, Newcastle upon Tyne NE20 9NH

T: 01661 823951 | www.sandersonyoung.co.uk

