



**Meadow View**  
Bradley Hall Farm







Meadow View, Bradley Hall Farm, Wylam, Northumberland NE41 8JP

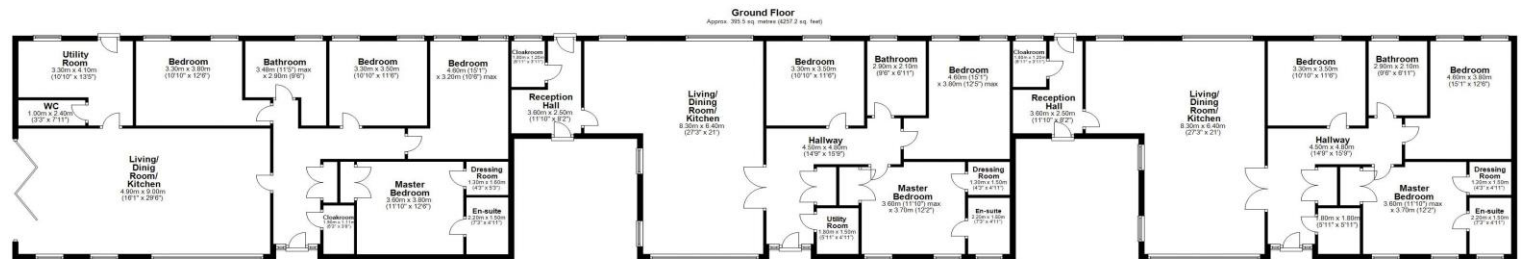
Guide Price £485,000

STYLISH SINGLE STOREY, NEW BUILD CONTEMPORARY HOMES IN A UNIQUE RURAL LOCATION, WITH FABULOUS OPEN ASPECT VIEWS

Meadow View is an impressive new build contemporary home, one of only three in this exclusive Bradley hall Farm development, with fabulous open aspect rural views, generous lawned gardens, a block paved driveway for several cars and a covered car port. The stylish three bedroom, single storey home has been designed in keeping with the barn conversions of the farm steading, constructed in stone with cedar cladding, with high quality kitchens and bathrooms, oak flooring and internal doors, and excellent natural light from the large picture windows overlooking the gardens. Externally, the property has large lawned gardens and a covered car port with direct access into the property.

Reception hallway with built in storage | Cloakroom/wc | Magnificent open plan living/dining room and kitchen | Stylish contemporary kitchen with granite worktops and integrated appliances | Utility room and wc | Master bedroom | Ensuite shower/wc | Two further double bedrooms | Family bathroom/wc | Block paved driveway for numerous cars | NO UPWARD CHAIN





Total area: approx. 395.5 sq. metres (4267.2 sq. feet)  
Bradley Hall Farm, Wylam

All enquiries to our Ponteland Office | Coates Institute, Main Street, Ponteland, Newcastle upon Tyne NE20 9NH

T: 01661 823951 | [www.sandersonyoung.co.uk](http://www.sandersonyoung.co.uk)

