



23 Highfield Road
Westerhope





23 Highfield Road, Westerhope, Newcastle Upon Tyne, NE5 5HS

Offers Over £325,000

A stunning and stylish newly refurbished, semi detached house, located towards the head of this much sought after leafy residential street of detached and semi detached period homes. The period house has been extended to the ground floor and into the loft, creating impressive accommodation over three floors, with a gravel driveway to the front, lawned front garden and fabulous landscaped garden to the rear. The property has been thoughtfully redesigned to a high specification throughout, with superb natural light on the ground floor from the three Velux windows and French doors in the open plan kitchen/living area and, in the master bedroom from the newly created dormer with Juliet balcony, with scope to easily create two bedrooms, rather than one large master, to the second floor.

Hallway | Sitting room with feature fireplace recess | Fabulous open plan kitchen/living room opening to the decked terrace and garden | Contemporary fitted kitchen with integrated appliances | First floor | Two double bedrooms | Stylish bathroom/wc | Second floor | Impressive master bedroom with French doors to the Juliet balcony | Ensuite shower/wc | Newly landscaped east facing rear garden and decked terrace | Gravel driveway | NO UPWARD CHAIN

Newcastle City centre - approx 3.7 miles Newcastle International Airport - approx. 3.6 miles

Services: Mains gas, electric water and drainage | Tenure: Freehold | Council Tax: C | Energy Performance Certificate: C





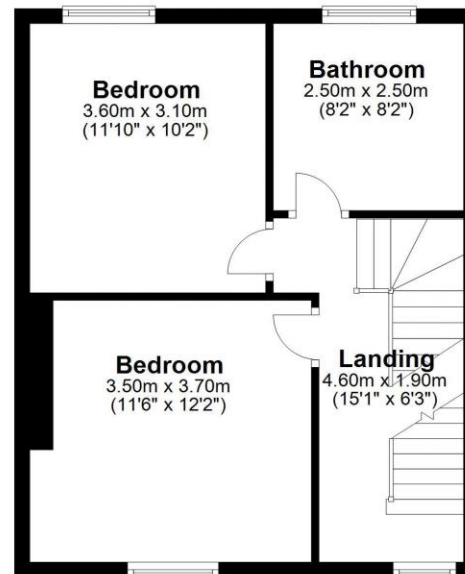




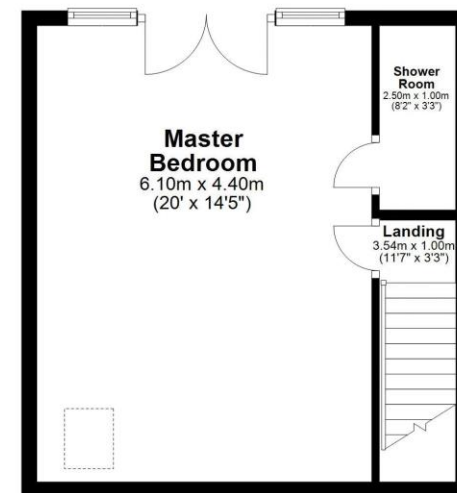
Ground Floor
Approx. 58.4 sq. metres (629.1 sq. feet)



First Floor
Approx. 41.0 sq. metres (441.6 sq. feet)



Second Floor
Approx. 33.6 sq. metres (361.6 sq. feet)



Total area: approx. 133.1 sq. metres (1432.3 sq. feet)
23 Highfield Road, Westerhope

All enquiries to our Ponteland Office | Coates Institute, Main Street, Ponteland, Newcastle upon Tyne NE20 9NH

T: 01661 823951 | www.sandersonyoung.co.uk

