



The Dairy, 6
Fell House Farm Road | North Walbottle





The Dairy, 6 Fell House Farm Road, North Walbottle, Newcastle upon Tyne NE5 1QL

Guide Price £445,000

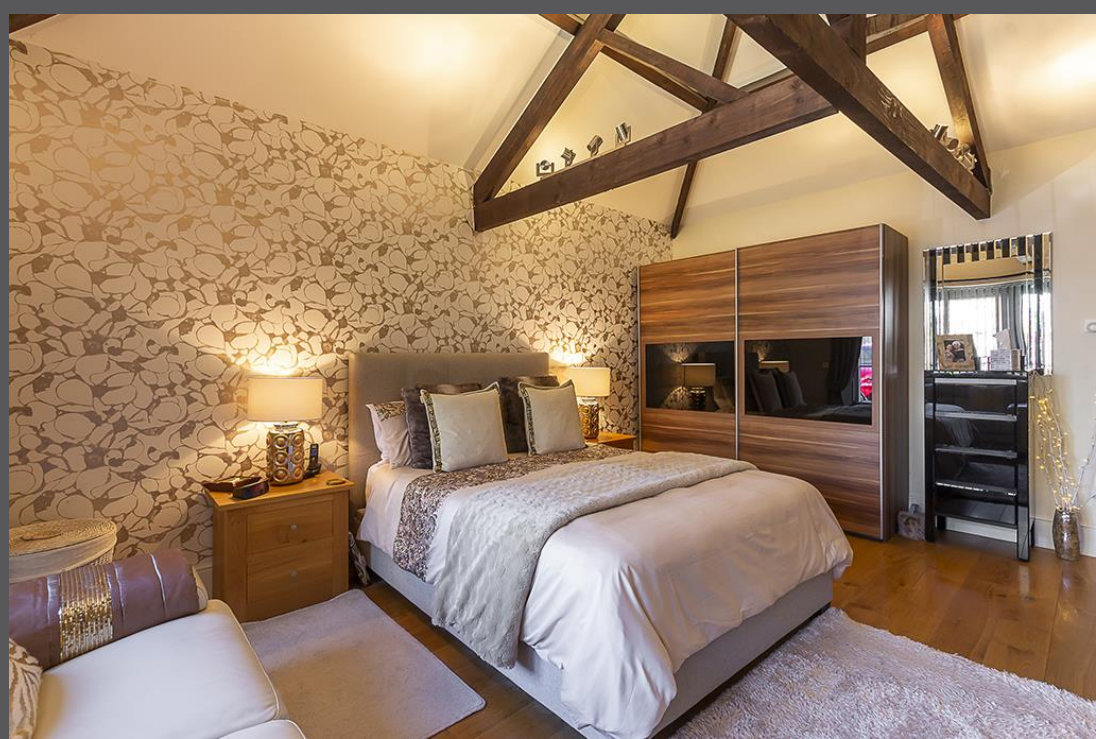
An impressive single storey conversion, one of only six individually designed dwellings on this traditional former farm steading, with electric gated driveway and attractive private walled garden. Fell House Farm, developed by Dere Street Homes in 2009/10, is located down a quiet bridlepath toward the edge of North Walbottle and is well placed for easy access to Newcastle city centre, the A1 trunk road and Newcastle International Airport. The three bedroom conversion is beautifully finished internally, with a high specification throughout, whilst still retaining original features including fabulous beamed vaulted ceilings to the sitting room and bedrooms and five stunning stone arch byre windows overlooking the garden.

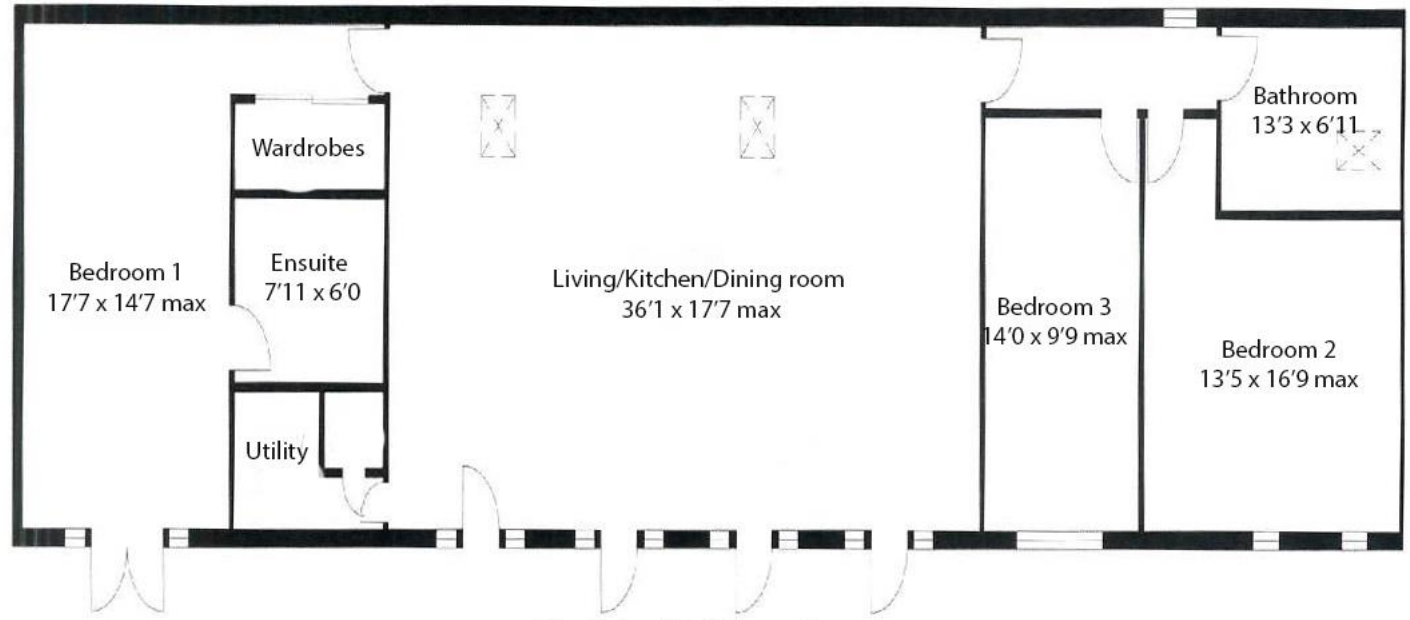
Vestibule | Magnificent 36ft open plan living area with beamed vaulted ceiling - sitting room, dining area and fitted kitchen | Quality kitchen with granite worktops and integrated appliances | Utility room | Superb master bedroom with beamed vaulted ceiling | Dressing room area | Luxury ensuite shower/wc | Two further double bedrooms | Well appointed family bathroom/wc | Electric gates open to a block paved driveway for 2/3 cars
Lawned garden with attractive stone wall, decked terrace and timber storage shed | No upward chain

Services: Mains gas, electric, water and drainage | Tenure: Freehold | Council Tax: Band E
Energy Performance Certificate: C









The Dairy, 6 Fell House Farm

Please note: Measurements are approximate. Floorplans are for illustrative purposes only

All enquiries to our Ponteland Office | Coates Institute, Main Street, Ponteland, Newcastle upon Tyne NE20 9NH

T: 01661 823951 | www.sandersonyoung.co.uk

