



**36 Grosvenor Place**

Jesmond









36 Grosvenor Place, Jesmond, Newcastle upon Tyne NE2 2RE

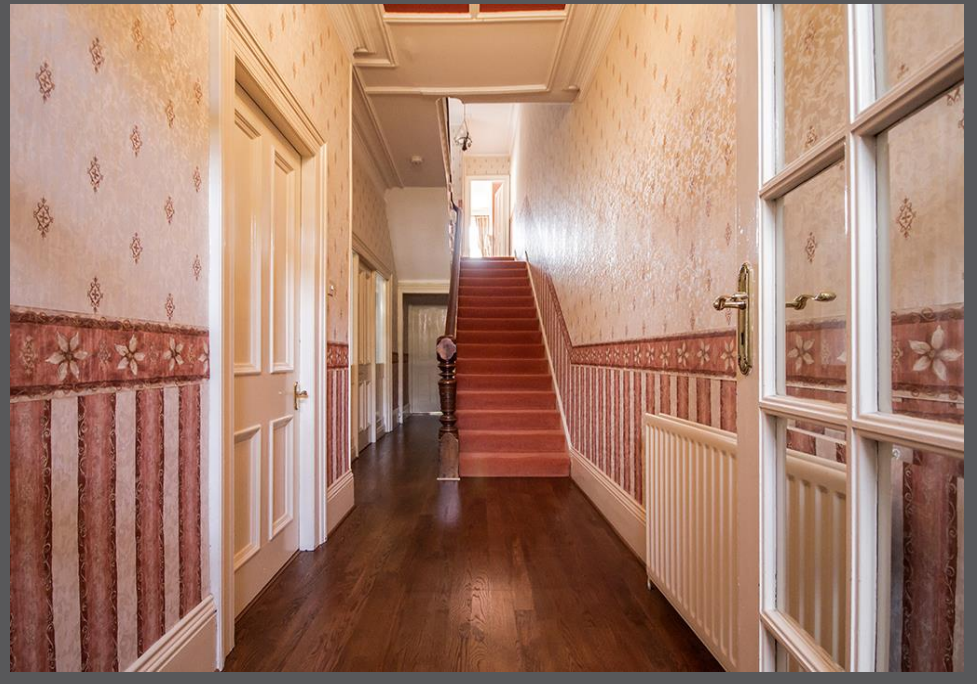
Offers Over £535,000

A handsome eight bedroom, period terraced house on this popular central Jesmond residential road, with an attractive and mature garden to the front, enclosed courtyard to the rear and a single garage. The impressive family home offers well proportioned and generous accommodation over three floors, with many original and traditional features retained; marble and cast iron fireplaces to the reception rooms and bedrooms, decorative coving and moulding to the ceilings, sash windows and original internal doors. The property has a stone balcony area opening from the master bedroom, lovely solid wood floors to the ground floor and 'Hammonds' fitted wardrobes to four of the bedrooms.

Vestibule | Reception hallway | Cloakroom/wc | Sitting room with bay window, wood floors and beautiful marble fireplace | Dining room with wood floors and fire surround | Excellent family kitchen/breakfast room | Utility room  
Half landing - Bathroom and separate wc | First floor | Fabulous master bedroom with period fireplace, fitted wardrobes and doors to the balcony area | Interconnecting door to bedroom four/dressing room | Two further double bedrooms with period fireplaces, and one with fitted wardrobes | Second floor | Three double bedrooms with cast iron fireplaces, two with fitted wardrobes | Single bedroom | Shower room/wc | Mature west facing front garden  
Single garage | No upward chain

Services: Mains electric, gas, water and drainage | Tenure: Freehold | Council Tax: Band E  
Energy Performance Certificate: Rating E







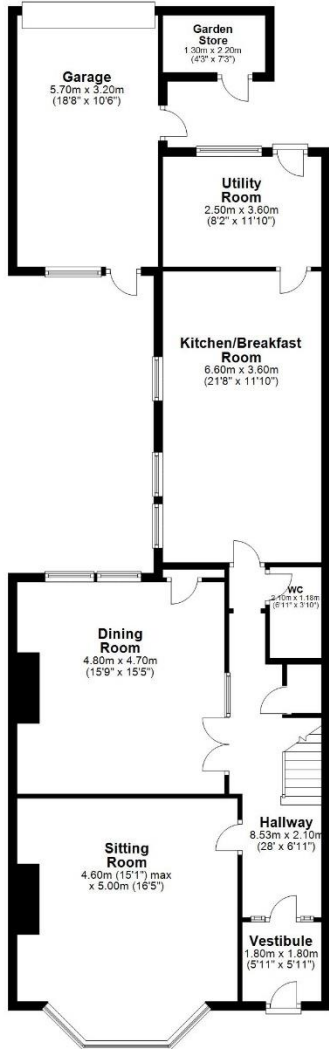






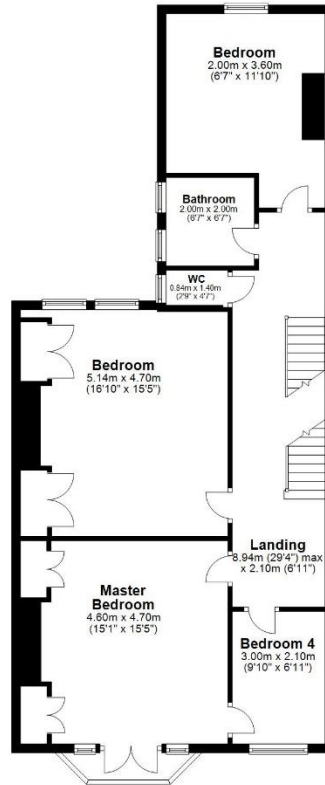
**Ground Floor**

Approx. 126.3 sq. metres (1359.4 sq. feet)



**First Floor**

Approx. 92.0 sq. metres (990.5 sq. feet)



**Second Floor**

Approx. 76.9 sq. metres (828.2 sq. feet)



Total area: approx. 295.3 sq. metres (3178.0 sq. feet)  
**36 Grosvenor Place, Jesmond**





All enquiries to our Gosforth Office | 95 High Street, Gosforth, Newcastle upon Tyne NE3 4AA

T: 0191 213 0033 | [www.sandersonyoung.co.uk](http://www.sandersonyoung.co.uk)

