



14 Featherstone Grove

Great Park





14 Featherstone Grove, Great Park, Gosforth, Newcastle upon Tyne NE3 5RJ

Guide Price £325,000

A well-proportioned, three storey townhouse, occupying a pleasant location on the popular Melbury area of Great Park, well positioned for good access to local amenities and schools. The property offers approximately 2000 sq.ft of accommodation set out across the three levels with lovely private enclosed rear garden, parking and double garage to the rear.

Entrance lobby | Hallway with stairs to first floor | Ground floor double bedroom which enjoys walk in wardrobe and en suite shower room/wc | Ground floor sitting room overlooking the rear garden | Utility room | From the first floor landing; | Spacious lounge with feature fireplace | Access doors from the lounge to the dining room | Fitted breakfasting kitchen including integrated gas hob, extractor, double oven, dishwasher and fridge/freezer | Study | Stairs gives access to the second floor landing | Master bedroom with built in wardrobe and en suite shower room/wc | Three further bedrooms | Family bathroom/wc incorporating separate shower cubicle. | Externally- Small town garden area to front and to the rear is a very pleasant enclosed lawned garden with raised decking. Double detached garage with parking accessed from the rear | No upward chain

Services: Mains electric, gas, water and drainage | Tenure: Freehold | Council Tax: Band F
Energy Performance Certificate: Rating C



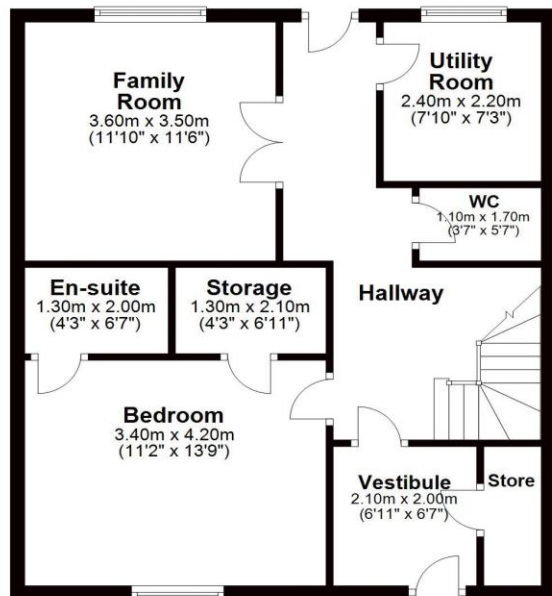






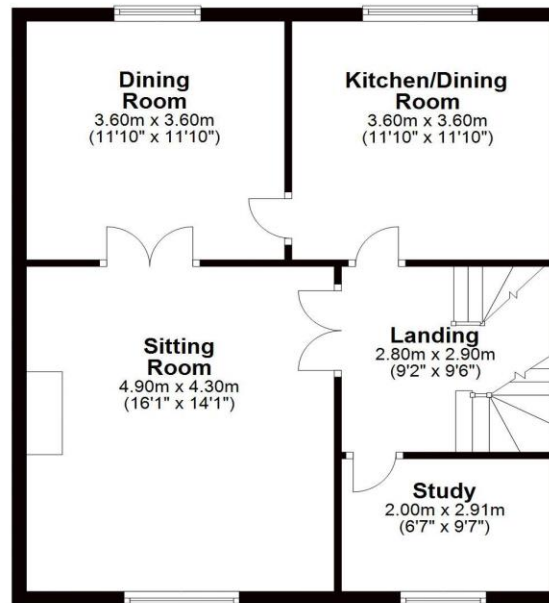
Ground Floor

Approx. 61.2 sq. metres (658.4 sq. feet)



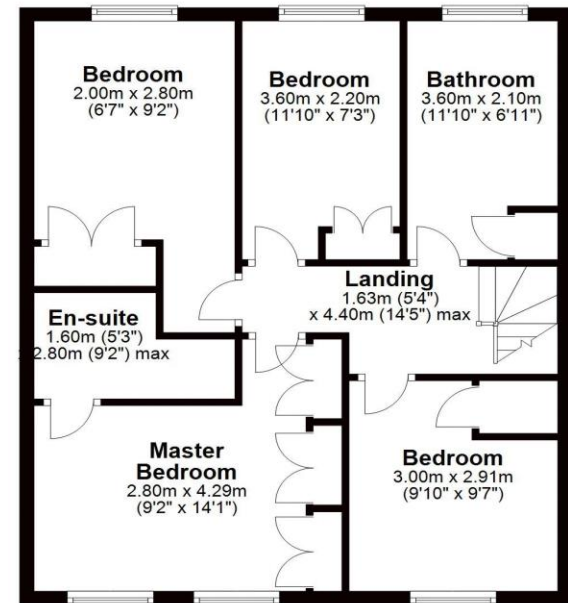
First Floor

Approx. 62.8 sq. metres (675.8 sq. feet)



Second Floor

Approx. 62.2 sq. metres (669.9 sq. feet)



Total area: approx. 186.2 sq. metres (2004.1 sq. feet)

14 Featherstone Grove, Great Park



All enquiries to our Gosforth Office | 95 High Street, Gosforth, Newcastle upon Tyne, NE3 4AA

T: 0191 2130033 | www.sandersonyoung.co.uk

