



Meadowcroft Cottage
Warenford





Meadowcroft Cottage, Warenford, Belford, Northumberland, NE70 7HY

£285,000

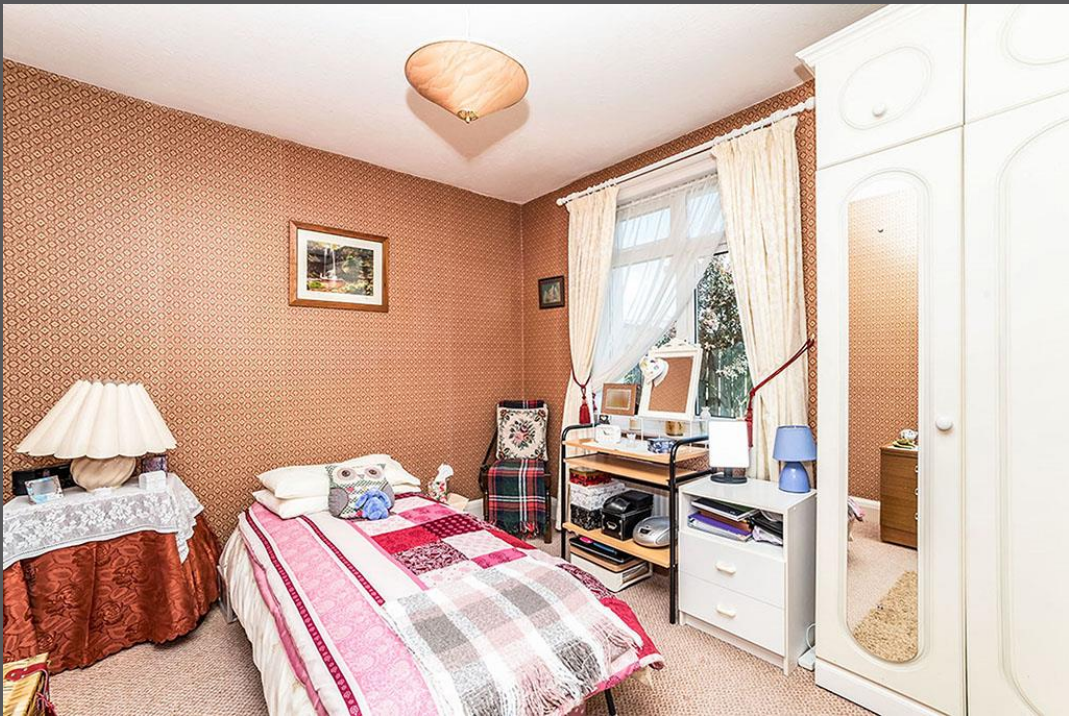
Attractive 1930's 3 bedroom detached bungalow, occupying a generous mature gardens site within the rural village of Warenford, just a short drive from Northumberland's Heritage Coastline. The property offers spacious and well-presented accommodation, whilst enjoying lovely views across open countryside towards the sea.

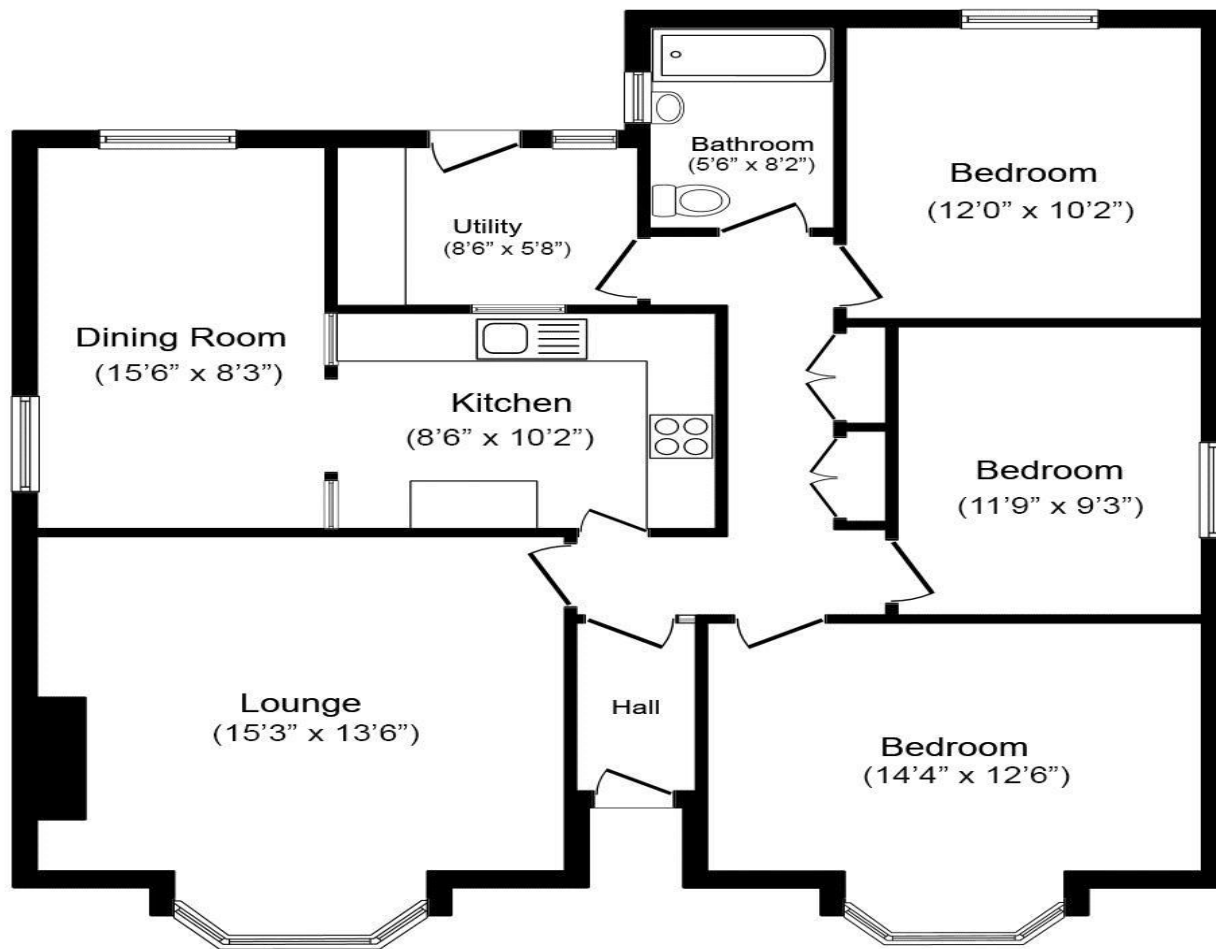
Entrance Hall | Lounge with dual aspect and feature fireplace | Fitted kitchen/dining area or snug | Utility room with external access door to the rear gardens | Master bedroom with bay window giving lovely views across countryside to the sea | Two further double bedrooms | Bathroom/wc including over bath shower with screen | Externally - To the front of the property is a gravelled driveway and parking area providing ample off street parking and leading to a detached garage. Large enclosed garden to rear, laid mainly to lawn. The Village of Warenford has a local public house/restaurant with further amenities available within the village of Belford just three miles to the North. There is excellent access to the A1 for commutability with a further general store and petrol station close by at Adderstone. Warenford is ideally positioned for access to all of Northumberland Heritage coastline being just 5 miles West of the much sought-after village of Bamburgh.

Services: Mains Electric, Water, Oil Fired Central Heating & Drainage to septic tank | Tenure: Freehold | Council Tax: Band D | EPC: E









Floor Plan

Total floor area 102.0 sq. m. (1,098 sq. ft.) approx

This plan is for illustration purposes only and may not be representative of the property.
Plan not to scale.

Powered by audioagent.com

All enquiries to our Alnwick Office | 35 Bondgate Without, Alnwick, Northumberland NE66 1PR

T: 01665 600 170 | www.sandersonyoung.co.uk

