



**19 Ridgely Drive**

Ponteland









19 Ridgely Drive, Ponteland, Newcastle upon Tyne NE20 9BJ

Guide Price £295,000

A lovely three bedroom, three reception room semi detached house, with a fabulous mature and private garden and elevated views to the adjacent woodland, open fields and Prestwick Hall in the distance. The excellent family home, lived in by the current owners for over 50 years, offers a great opportunity for buyers seeking a good central location in Ponteland with open aspect views and scope for further development/extending (subject to normal planning consents). The house has been reconfigured, with the conversion of the original garage into a study/family room, and the addition of a new garage with utility and ground floor wc to the side elevation.

Entrance porch | Hallway | Study/family room | Sitting room with bay window | Dining room with a door to the terrace and rear garden | Galley style kitchen with pantry cupboard | Utility room and ground floor wc  
First floor landing with access to part boarded loft | Three double bedroom, two with fitted wardrobes and shelving, and the third with storage cupboard | Bathroom and separate wc | Block paved driveway  
Additional small driveway and single attached garage with electric roller door and inspection pit  
Attractive gardens with raised paved terrace, and two timber sheds | Mature trees, vegetable beds, soft fruit bushes, and apples trees.

Services: Mains electric, gas, water and drainage | Tenure: Freehold | Council Tax: Band D  
Energy Performance Certificate: Rating D







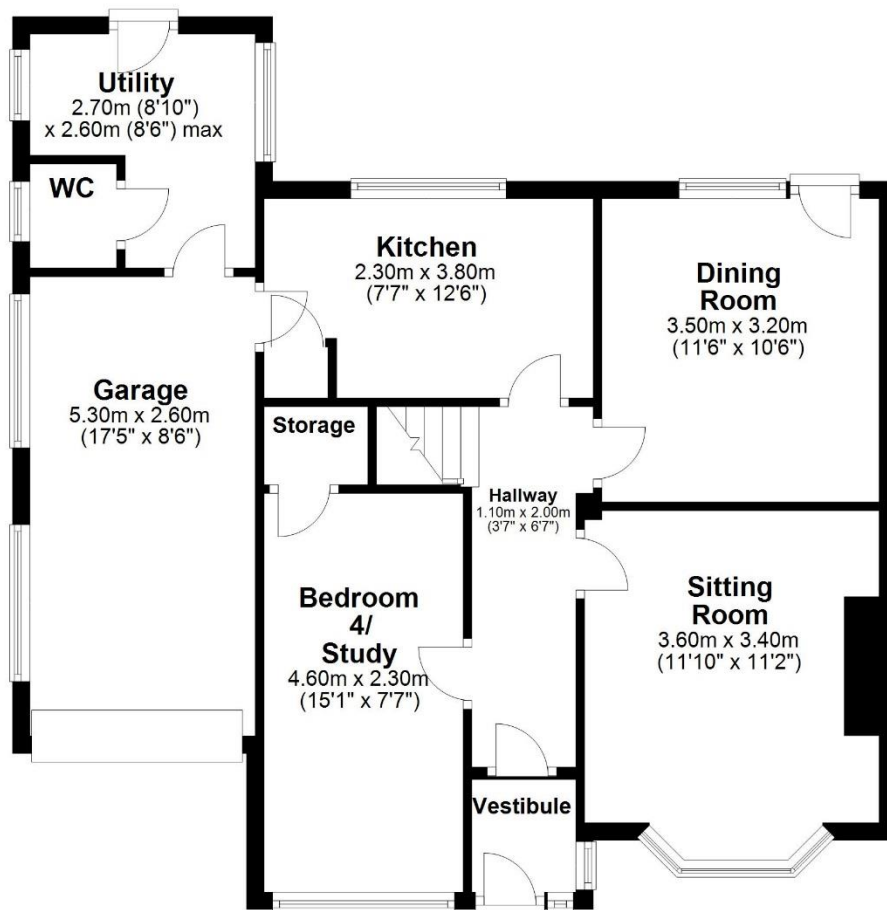






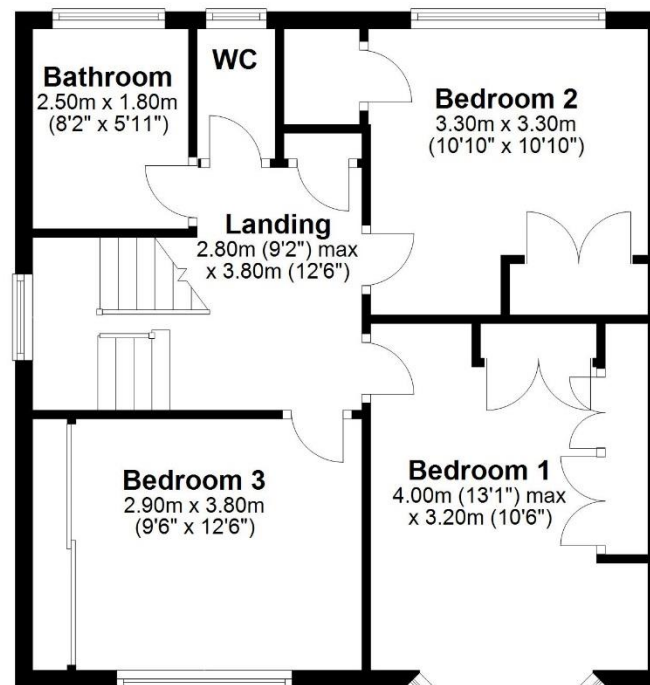
### Ground Floor

Approx. 75.9 sq. metres (816.5 sq. feet)



### First Floor

Approx. 52.9 sq. metres (569.1 sq. feet)



Total area: approx. 128.7 sq. metres (1385.6 sq. feet)

**19 Ridgely Drive, Ponteland**





All enquiries to our Ponteland Office | Coates Institute, Main Street, Ponteland, Newcastle upon Tyne, NE20 9NH

T: 01661 823951 | [www.sandersonyoung.co.uk](http://www.sandersonyoung.co.uk)

