



6 Bloomsbury Court

Gosforth





6 Bloomsbury Court, Gosforth, Newcastle upon Tyne NE3 4LW

Guide Price £645,000

An immaculately presented four bedroom detached house, well positioned in this much sought after development of executive homes, in the centre of Gosforth, and within walking distance of the High Street, with its wide variety of shops, cafes, and bars/restaurants. The superb family home has well proportioned accommodation set over two floors, a double width driveway with parking for up to four cars, and a detached double garage with two electric doors. The property has been a much loved home for 15 years, and has been upgraded by the current owner with quality double glazed windows and a front door, refurbished bathrooms and new fascias to the roof for easy maintenance.

Reception hallway | Cloakroom/wc | Dining room | Sitting room with doors to the Conservatory | Conservatory overlooking the garden | Excellent Kitchen/breakfast room | Utility room | First floor | Master suite with dressing area and fitted wardrobes to one wall | Ensuite shower/wc | Two further double bedrooms and a single bedroom | Family bathroom/wc | Attractive landscaped gardens and patio seating area | Detached double garage with two garage doors | Large driveway with parking for four cars.

Services: Mains electric, gas, water and drainage | Tenure: Freehold | Council Tax: Band G
Energy Performance Certificate: Rating D



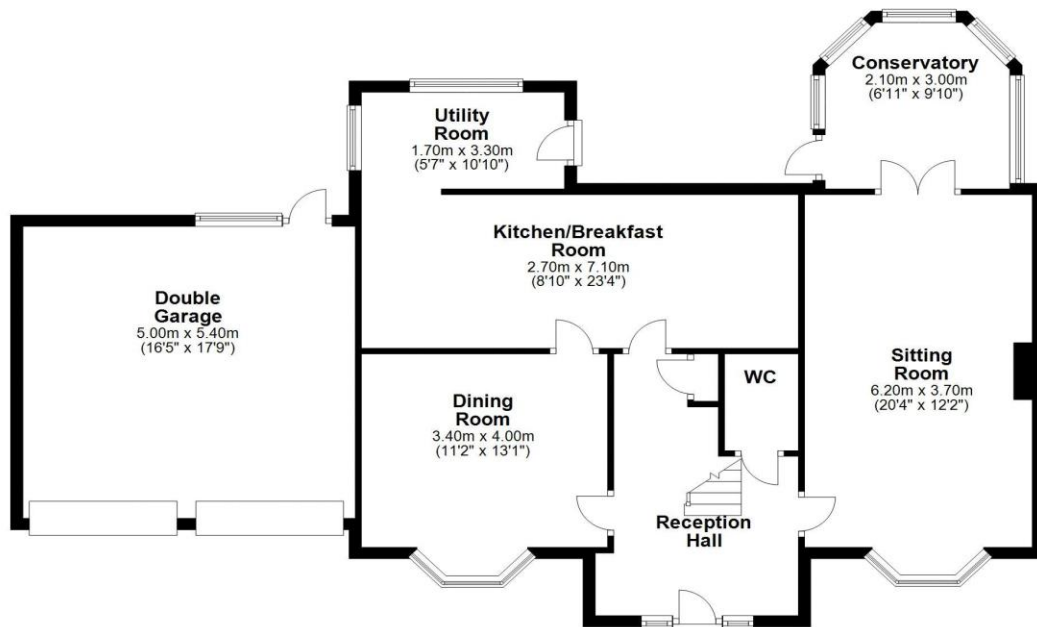






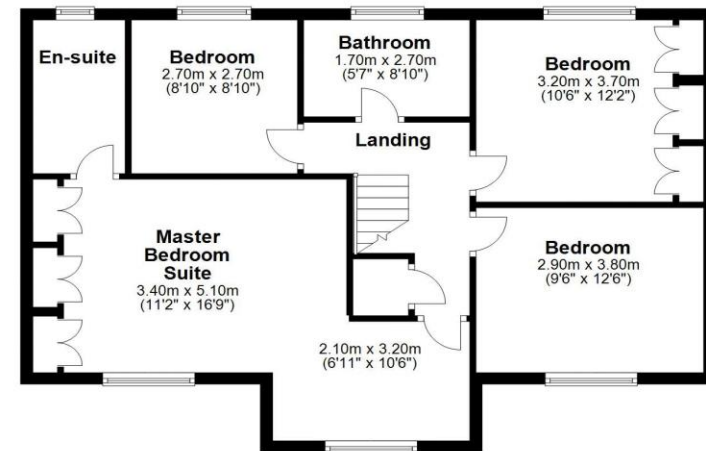
Ground Floor

Approx. 113.8 sq. metres (1225.0 sq. feet)



First Floor

Approx. 71.7 sq. metres (771.6 sq. feet)



Total area: approx. 185.5 sq. metres (1996.6 sq. feet)

6 Bloomsbury Court, Newcastle Upon Tyne



All enquiries to our Gosforth Office | 95 High Street, Gosforth, Newcastle upon Tyne NE3 4AA

T: 0191 213 0033 | www.sandersonyoung.co.uk

