



# The Old Stables

Twizell





## The Old Stables, Twizell, Ponteland NE20 0AL

Offers in the Region Of £525,000

The Old Stables is a fabulous Grade II listed stone detached house, converted from the original 18th century Hayloft, in this attractive farm steading of four individual dwellings. The four bedroom family home occupies a beautiful garden site of approx. 0.34 acres, with excellent open aspect easterly views over the surrounding fields and countryside, a long private driveway with parking for several cars, a timber double garage and part walled garden. The property, lived in by the current owner for 20 years, offers versatile single storey accommodation, retaining many traditional features including vaulted beamed ceilings, mezzanine area in the sitting room, original arch byre windows, and wood internal latch doors.

Hallway | Magnificent open plan kitchen/living room with arch byre windows and beamed vaulted ceiling | Generous sitting room with feature mezzanine area and beamed vaulted ceiling | Master bedroom | Ensuite shower/wc | Utility and store with access to the garden | Night hallway | Three further double bedrooms | Shower room/wc | Timber double garage | Long private driveway  
Attractive mature gardens with open rural views | The property is ideally located for easy access to Ponteland (approx 4.8 miles ) and Morpeth (approx. 6.7 miles ), with their wide variety of shops, cafes, bars/restaurants, local amenities and schooling for all ages - the school bus collects from the end of the lane for Ponteland schools. There are excellent road links to Newcastle city centre, Newcastle International Airport and the A1 for commuting throughout the region.

Services: Mains electric and water. Private drainage | Tenure: Freehold | Council Tax: Band F

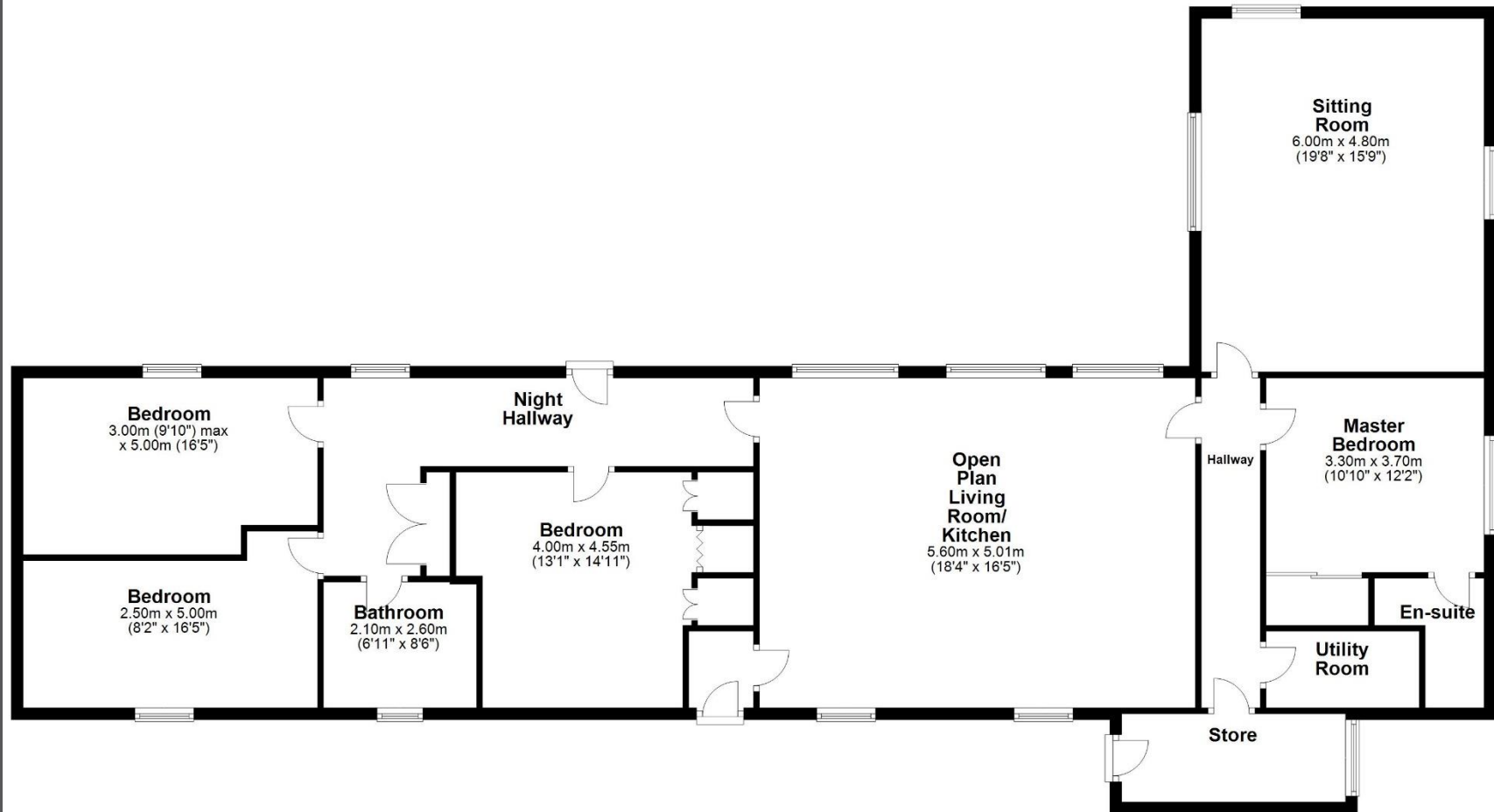






### Ground Floor

Approx. 173.7 sq. metres (1869.2 sq. feet)



Total area: approx. 173.7 sq. metres (1869.2 sq. feet)

**The Old Stable, Ponteland**



All enquiries to our Sanderson Young Ponteland Office | Coates Institute, Main Street, Ponteland NE20 9NH

T: 01661 823951 | [www.sandersonyoung.co.uk](http://www.sandersonyoung.co.uk)

