



Swinhoe House
South Street, Seahouses





SWINHOE HOUSE, SOUTH STREET, SEAHOUSES, NORTHUMBERLAND NE68 7RJ

GUIDE PRICE £325,000

A rare opportunity to purchase this individually designed three bedroom home. Enjoying a charming setting close to the harbour within the conservation area of the popular fishing village of Seahouses on Northumberland's Heritage Coastline. One of four newly constructed properties sympathetically designed using traditional materials, in keeping with the charm and heritage of it's surroundings whilst providing all the needs one would expect for modern living. This home has well-proportioned accommodation set out over three levels and will include a Juliet balcony from which to enjoy the views to the sea and coastline, as well as private parking within the courtyard to front. Ideally suited to those looking for either a main home, coastal retreat or holiday let investment, these homes will be finished to an excellent standard with the opportunity to complete the specification with a choice of kitchen design including integrated appliances.

Entrance hall | Cloakroom/wc | Open plan reception room incorporating a lounge and dining area with fitted kitchen including integrated appliances | To the first floor Master bedroom with en-suite bathroom/wc | Second double bedroom with en-suite shower room/wc | Stairs give access to the second floor where there is a third generous double bedroom with built-in wardrobes and en-suite bathroom/wc | Externally - allocated parking within the courtyard with communal bin store.

Services: Mains electricity, water and drainage with electric heating | Tenure: Leasehold with a 999 year lease | Council Tax Band: TBC | EPC: TBC | BLP 10 Year Warranty

Seahouses forms the gateway to the Farne Islands Nature Reserve and is ideally positioned from which to explore all of Northumberland's Heritage coastline from which walks can be enjoyed along the miles of unspoilt beaches and dunes. The bustling harbour area enjoys easy access to the village which has a variety of shops, restaurants/hotels and public houses. Seahouses has it's own links golf course and the 'Seafield' private leisure club with swimming pool. Just to the north of Seahouses is the Historic village of Bamburgh with its imposing Medieval castle and to the south the harbour village of Beadnell, popular for its beaches and water sports.

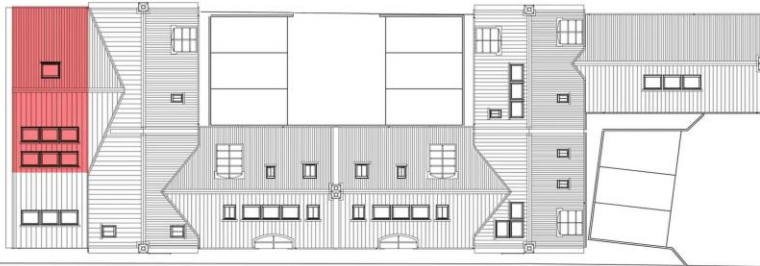




THORBURN'S YARD

South Street
Seahouses
Northumberland

HOUSE NO. 8
138m² / 1485_{sqft}



Site Plan



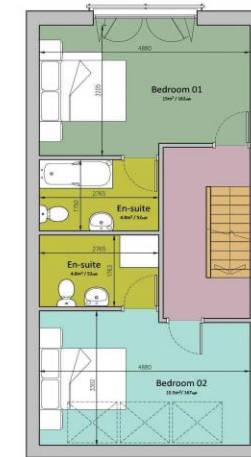
Location Plan



Looking South West within Thorburn Sq.



Ground Floor Plan



First Floor Plan



Looking South towards Thorburn Sq.



Second Floor Plan

All enquiries to our Alnwick Office | 35 Bondgate Without, Alnwick, Northumberland NE66 1PR

T: 01665 600 170 | www.sandersonyoung.co.uk

