



Daisy Cottage

Ewesley, Morpeth





Daisy Cottage, Ewesley, Morpeth, Northumberland NE61 4PR

Guide Price £450,000

A rare opportunity to purchase a unique detached house, formerly two railway cottages positioned on the former Scots Gap to Rothbury line, set within the picturesque valley of the River Font and Fontburn Reservoir with a private garden site of approximately 1.25 acres. The property has been further extended and refurbished over the last 17 years by the current owner, creating an impressive and deceptively spacious home and designed in keeping with a traditional railway signal box.

Vestibule | Magnificent sitting/dining room with an open fire | Kitchen/breakfast room | Two ground floor bedrooms | En-suite to master | Study/4th bedroom | Family bathroom/wc | First floor bedroom currently used as a home office with wood burning stove | Fabulous open aspect views | Driveway and gardens.

Ponteland and Alnwick - 18 miles, Rothbury - 7 miles, Longframlington - 12 miles, Newcastle upon Tyne - 27 miles

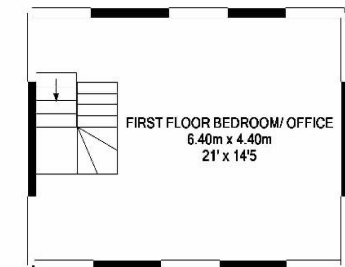
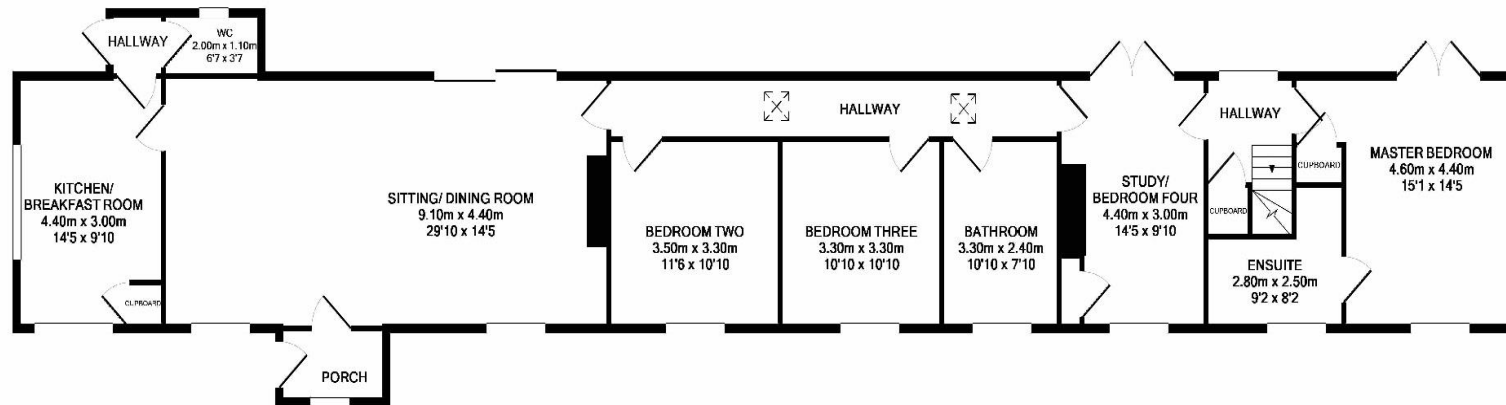
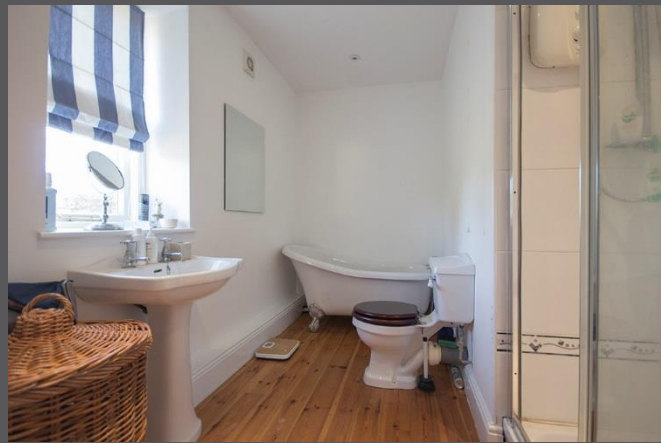
Services: Mains electric, private water and drainage | Tenure: Freehold | Council Tax: Band E | Energy Performance Certificate: Rating: G











1ST FLOOR
APPROX. FLOOR
AREA 28.2 SQ.M.
(303 SQ.FT.)

GROUND FLOOR
APPROX. FLOOR
AREA 139.7 SQ.M.
(1504 SQ.FT.)

TOTAL APPROX. FLOOR AREA 167.9 SQ.M. (1807 SQ.FT.)

Whilst every attempt has been made to ensure the accuracy of the floor plan contained here, measurements of doors, windows, rooms and any other items are approximate and no responsibility is taken for any error, omission, or mis-statement. This plan is for illustrative purposes only and should be used as such by any prospective purchaser. The services, systems and appliances shown have not been tested and no guarantee as to their operability or efficiency can be given

Made with Metropix ©2017



All enquiries to our Ponteland Office | Coates Institute, Main Street, Ponteland, Newcastle upon Tyne NE20 9NH

T: 01661 823951 | www.sandersonyoung.co.uk

