



34 Barmoor Drive
Newcastle Great Park





34 Barmoor Drive, Newcastle Great Park, Newcastle upon Tyne NE3 5RG

Guide Price £420,000

An impressive five bedroom semi detached house, located on Barmoor Drive in Newcastle Great Park, with a double garage, double width driveway for six cars, a front town garden and enclosed rear garden. The 'Bewick' style home, built by Barratt Homes in 2009, and only one a very few on the development, offers well proportioned and versatile accommodation over three floors. The house is beautifully presented throughout, with three reception rooms and a family kitchen/breakfast room.

Vestibule | Generous reception hallway | Cloakroom/wc | Family room with French doors to the garden | Ground floor guest bedroom with fitted wardrobe | Ensuite shower/wc | Utility room | First floor | Fabulous sitting room with French doors to the dining room | Dining room | Family kitchen/breakfast room with integrated appliances | Second floor | Master bedroom with built in wardrobes | Ensuite shower/wc | Two further double bedrooms with built in wardrobes | Study/bedroom five | Family bathroom/wc | Double garage and double width driveway for six cars | Landscaped rear garden with decked terrace.

Services: Mains electric, gas, water and drainage | Tenure: Freehold | Council Tax: Band F
Energy Performance Certificate: Rating B



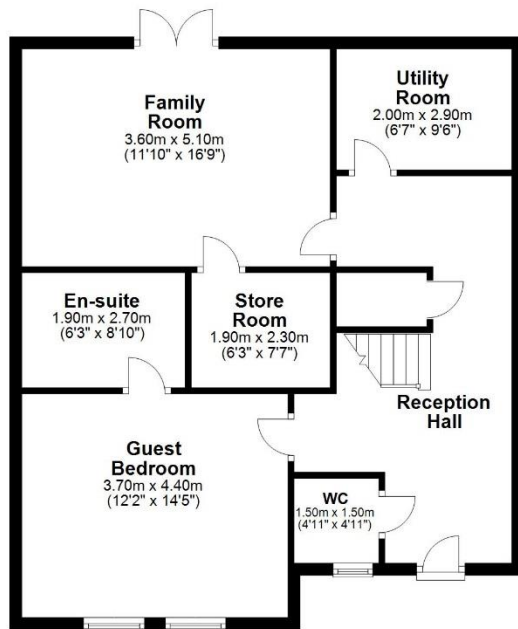






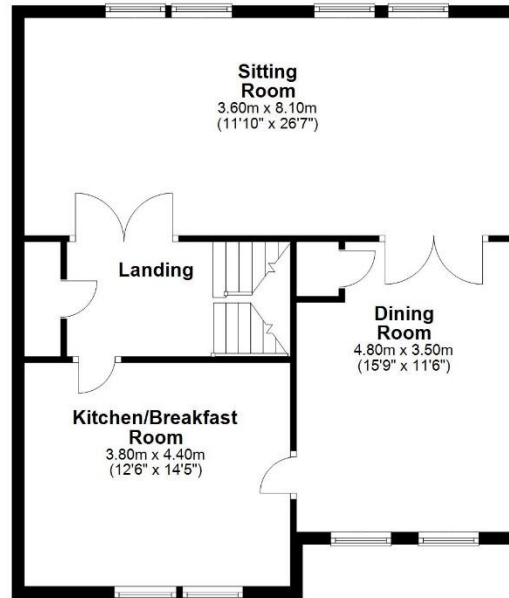
Ground Floor

Approx. 73.1 sq. metres (786.6 sq. feet)



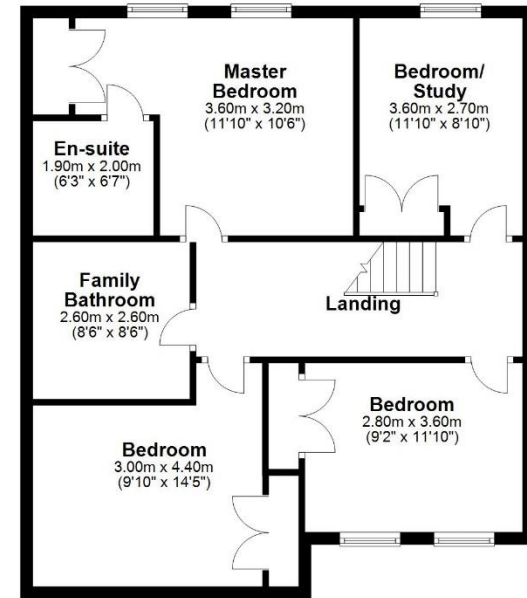
First Floor

Approx. 72.8 sq. metres (783.1 sq. feet)



Second Floor

Approx. 72.8 sq. metres (783.4 sq. feet)



Total area: approx. 218.6 sq. metres (2353.2 sq. feet)

34 Barmoor Drive, Great Park



All enquiries to our Gosforth Office | 95 High Street, Gosforth, Newcastle upon Tyne NE3 4AA

T: 0191 213 0033 | www.sandersonyoung.co.uk

