



8 Abberwick Walk
Greenside





8 Abberwick Walk, Greenside, Newcastle upon Tyne, NE13 9AY

Guide Price £437,950

A stunning and beautifully presented five bedroom detached house, located towards the edge of Greenside on a corner plot overlooking the pedestrian walkway and green towards the nature reserve, with gated secure driveway for 3 -4 cars and detached double garage. The impressive three storey family home, built by Barratt Homes in 2011 and one of only seven of this style on the development, has been reconfigured by the current owner creating a larger family kitchen/breakfast room and bathroom, and has impressive upgraded and newly fitted kitchen, utility and bathroom/ensuites. The attractive gardens have been landscaped with well stocked and mature borders, a central lawn, terrace seating areas with a timber pergola with climbing plants, fruit trees and shrubs - externally there are electric power points, lighting and a water supply.

Reception hallway | Cloakroom/wc | Fabulous sitting room with French doors to the rear garden and terrace and contemporary fireplace
Snug/dining room | Superb fitted kitchen with white hi-gloss cabinets, central island with breakfast bar, dining area with French doors opening to the terrace | Utility room | First floor | Beautiful generous master bedroom with fitted sliding door wardrobes | Dressing room
Large en-suite bathroom with twin basins, bidet and separate shower | Guest double bedroom with ensuite shower/wc | 3rd double bedroom | Family bathroom
Second floor | Study landing area | Two double bedrooms | Shower/wc | Detached double garage and gated double width driveway | Stunning landscaped gardens and an open aspect to the front.

Services: mains electricity, gas, water & drainage | Tenure: freehold | Council tax: Band F | EPC Rating: C

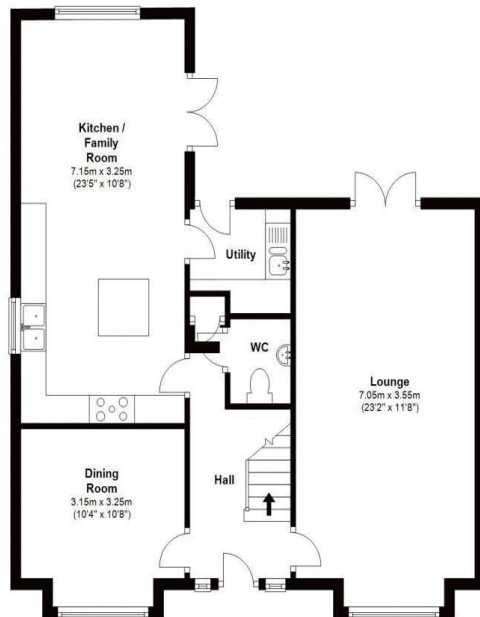




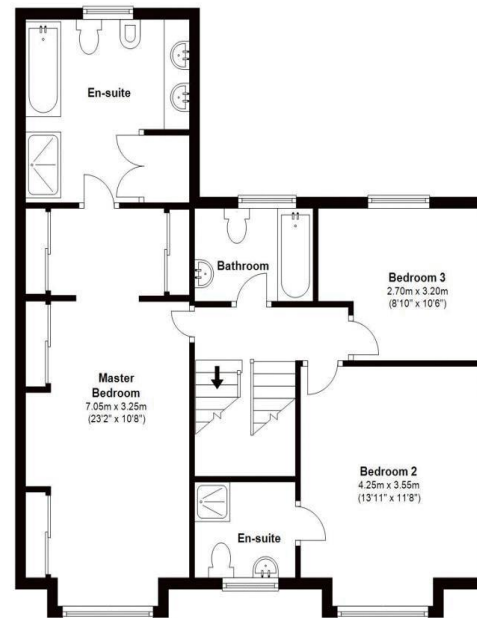




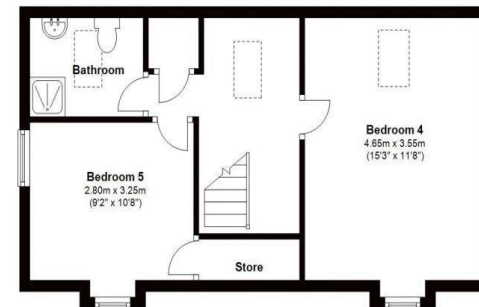
Ground Floor
Approx. 71.2 sq. metres (766.4 sq. feet)



First Floor
Approx. 71.8 sq. metres (773.1 sq. feet)



Second Floor
Approx. 42.5 sq. metres (457.3 sq. feet)



Total area: approx. 185.5 sq. metres (1996.8 sq. feet)

All enquiries to our Gosforth Office | 95 High Street, Gosforth, Newcastle upon Tyne NE3 4AA

T: 0191 213 0033 | www.sandersonyoung.co.uk

