



Plot 5, The Cheltenham
The Stables, Stannington





Front Elevation
1:50



Rear Elevation
1:50

HOUSE TYPE 4
PRIMARY ELEVATIONS



Example of previous new build property by JD Homes

Plot 5 (The Cheltenham), The Stables, Stannington, Morpeth, Northumberland,
NE61 6NH
Guide Price £385,000

A well proportioned three bedroom detached bungalow, with versatile accommodation extending to approx. 1267 sq. ft, beautiful generous garden plot with a southerly facing rear aspect, private entrance and driveway from Station Road and an attached single garage. New build properties from JD Homes are constructed using fabric-first construction techniques to create a, low-energy home built by skilled professionals. Key design features include; under floor heating, 'Evolution Storm 2' double glazed sash windows and aluminium bi-fold doors, electrically operated and insulated garage door, bespoke designed kitchens by KBB Interiors with granite worktops and AEG integrated appliances, Villeroy & Boch and Grohe bathroom fittings, SMART Home Technology for heating and security (with 'whole-home' SMART system upgrades available)

Vestibule | Hallway | Cloaks cupboard | Fabulous open plan living area with fitted kitchen, breakfast bar and doors opening to the rear garden | Dining room/study | Utility room | Master bedroom with doors opening to the rear garden and ensuite shower/wc | Two further double bedrooms | Family bathroom/wc | Gardens to the three sides | Private entrance and driveway from Station Road | Single attached garage | Completion – Autumn 2018

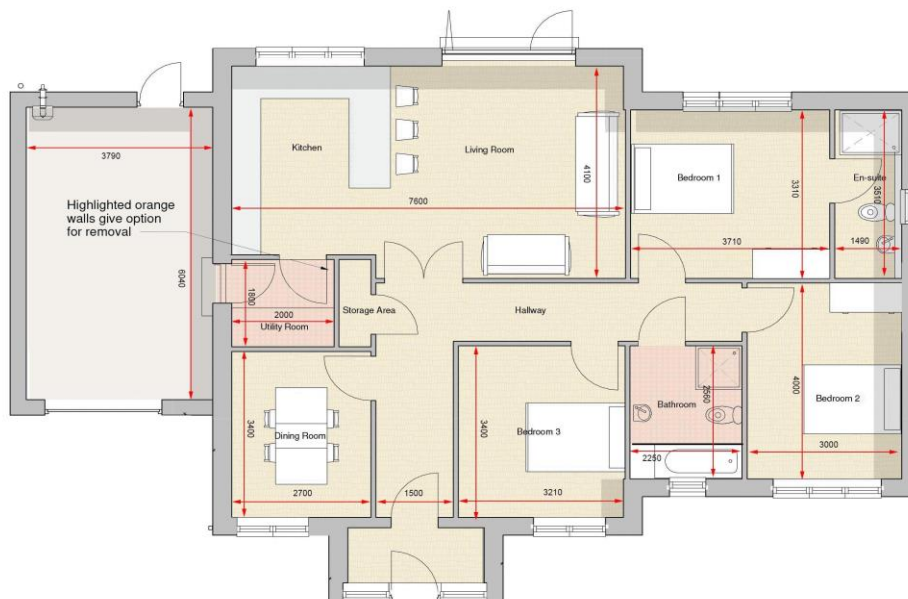
JD Homes is the residential building division of premier North East construction firm, JD Joinery and Building Services. Created to deliver bespoke residential properties for the region, JD Homes brings together market-leading, fabric-first building expertise with some of the regions brightest design and construction specialists. JD Homes creates family homes that offer something unique to homebuyers. The team are constantly pursuing excellence in the residential sector and construct homes with style and substance that draw on over 15 years of experience creating some of the region's most forward-thinking properties. Fabric-first construction is a hallmark of JD Homes. JD Joinery and Building Services is one of only a small number of construction firms experienced in the building of Passivhaus certified properties and have been recognised nationally by the Passivhaus Trust, Federation of Master Builders and Local Authority Building Control for their high level of construction quality.

For more details on JD Homes, please visit www.jdjoineryandbuilding.co.uk/jd-homes





Example of previous new build property by JD Homes



HOUSE TYPE 4

PRIMARY PLANS

Area 117m² - 1267 Sqft

PLEASE NOTE: DIMENSIONS MAY CHANGE WITHIN CONSTRUCTION- TO BE USED AS REFERENCE ONLY

All enquiries to our Gosforth Office | 95 High Street, Gosforth, Newcastle upon Tyne NE3 4AA

T: 0191 213 0033 | www.sandersonyoung.co.uk

