



The Harrow (Plot 14)
Furrow Grove





The Harrow (Plot 14), Furrow Grove, Stanington, Morpeth NE61 6FB

Guide Price £440,000

The Harrow is a luxury three bedroom detached bungalow, circa 1722 sq ft, positioned to the southern corner of this exclusive cul de sac development of bungalows, with private electric gated entrance, detached double garage, and a large south and west facing rear garden with fabulous open aspect views to the surrounding countryside. The property is approached via a private block paved roadway, and has a feature art-stone pillared frontage.

Design features include; stunning vaulted ceiling and cathedral-style window to the sitting room, French doors opening to the south facing garden, oak internal doors, under floor heating, contemporary fitted kitchen with large central island, granite worktops and NEFF integrated appliances, and fully turfed front and rear gardens.

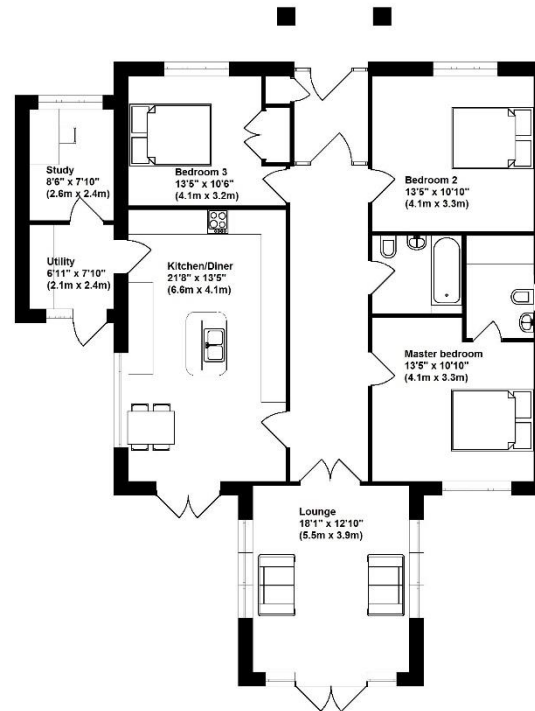
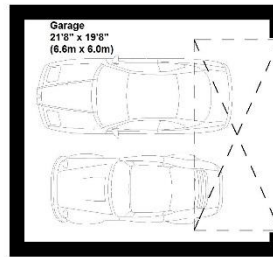
Vestibule | Reception hallway | Sitting room with vaulted ceiling and French doors opening to the garden | Luxury 21ft open plan kitchen/dining room | Home office | Utility room | Master bedroom | Ensuite shower/wc | Two further double bedrooms | Family bathroom/wc | Detached double garage with electric doors and electric gated driveway | South and west facing rear garden.

Furrow Grove is an exclusive development of six, architect designed, detached bungalows, newly built to a high specification throughout. There is scope for buyers to design bespoke internal layouts, in conjunction with Altoria Development, with a choice of internal paintwork throughout and kitchen cabinets.

The properties are of Freehold tenure and have a 10 year Build Warranty provided.

Please note: Images used are for illustrative purposes only





Please note: Floorplans are for illustrative purposes only and measurements are approximate

All enquiries to our Gosforth Office | 95 High Street, Gosforth, Newcastle upon Tyne NE3 4AA

T: 0191 213 0033 | www.sandersonyoung.co.uk

