



The Sickle (Plot 12)
Furrow Grove





The Sickle (Plot 12), Furrow Grove, Stannington, Morpeth NE61 6FB

Guide Price £420,000

The Sickle is a well proportioned three bedroom detached bungalow, circa 1776 sq ft, positioned to the southern boundary of this exclusive cul de sac development of bungalows with fabulous open aspect views to the surrounding countryside. The property is approached via a private roadway, and has a feature art-stone pillared frontage, driveway and double integral garage with electric doors.

Design features include; stunning vaulted ceiling and cathedral-style window to the sitting room, French doors opening to the south facing garden, oak internal doors, under floor heating, contemporary fitted kitchen with large central island, granite worktops and NEFF integrated appliances, and fully turfed front and rear gardens.

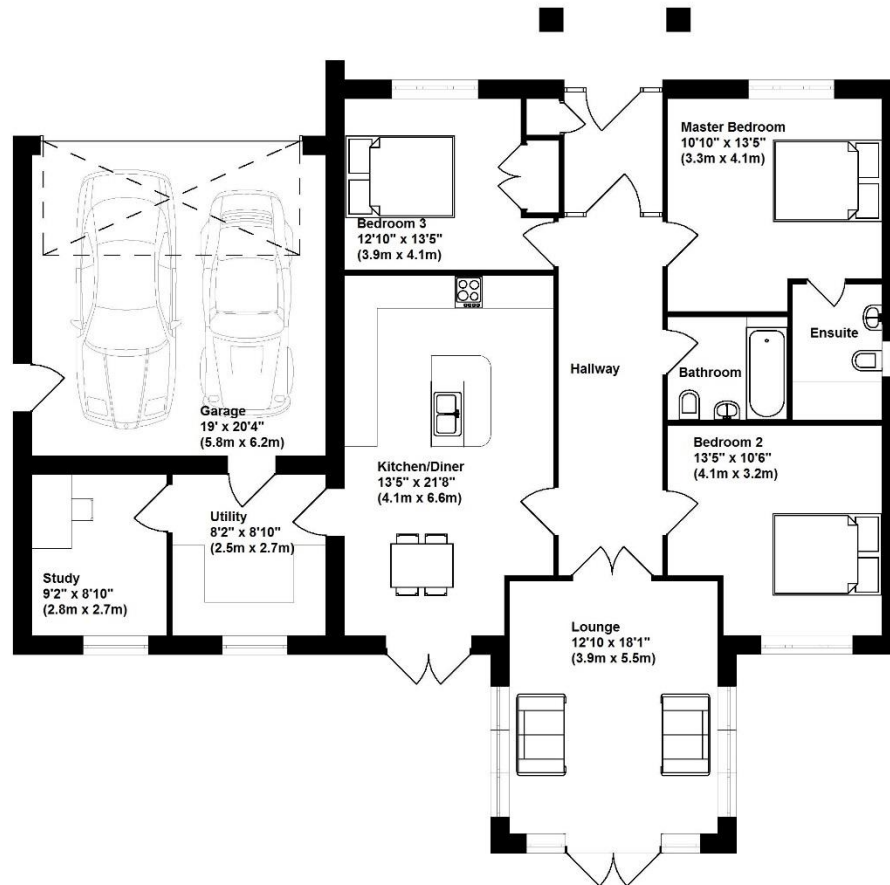
Vestibule | Reception hallway | Sitting room with vaulted ceiling and south facing views | Home office | Luxury open plan kitchen/dining room | Utility room | Master bedroom | Ensuite shower/wc | Two further double bedrooms | Family bathroom/wc | Double integral garage and driveway | South facing rear gardens with open aspect views.

Furrow Grove is an exclusive development of six, architect designed, detached bungalows, newly built to a high specification throughout. There is scope for buyers to design bespoke internal layouts, in conjunction with Altoria Development, with a choice of internal paintwork throughout and kitchen cabinets.

The properties are of Freehold tenure and have a 10 year Build Warranty provided.

Please note: Images used are for illustrative purposes only





Please note: Floorplans are for illustrative purposes only and measurements are approximate

All enquiries to our Gosforth Office | 95 High Street, Gosforth, Newcastle upon Tyne NE3 4AA

T: 0191 213 0033 | www.sandersonyoung.co.uk

