



15 Greens Park
Warkworth





15 GREENS PARK WARKWORTH MORPETH NORTHUMBERLAND NE65 0GY

GUIDE PRICE £325,000

A LOVELY THREE BEDROOM END TERRACED TOWNHOUSE, WELL POSITIONED IN THIS EXCLUSIVE MODERN COURTYARD DEVELOPMENT IN WARKWORTH, CLOSE TO THE RIVER COQUET, WITH STEPS LEADING UP TO WARKWORTH CASTLE AND THE VILLAGE, WITH ITS RANGE OF EXCELLENT INDEPENDENT SHOPS, CAFES, AND PUBS/RESTAURANTS. THE WELL-PRESENTED THREE STOREY HOUSE HAS AN ENCLOSED REAR GARDEN, DRIVEWAY AND SINGLE INTEGRAL GARAGE AND BENEFITS FROM DOUBLE GLAZING AND GAS CENTRAL HEATING.

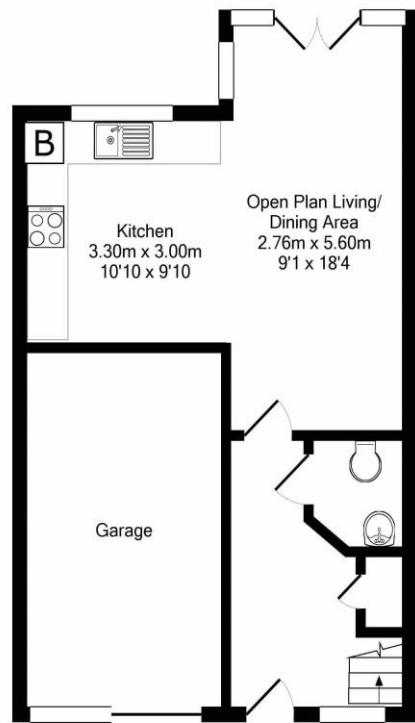
Hallway | Cloakroom/wc | Fabulous open plan living/dining and kitchen with French doors opening to the rear garden | First floor | Sitting room | Two double bedrooms (one currently used as a music room) | Shower room/wc | Second floor | Impressive master bedroom with access to a large loft for storage | Ensuite bathroom/wc | Driveway and garage | Rear garden.

Services: Mains gas, electricity, water and drainage services, and gas central heating | Tenure: Freehold | Council Tax Band: E | EPC: C

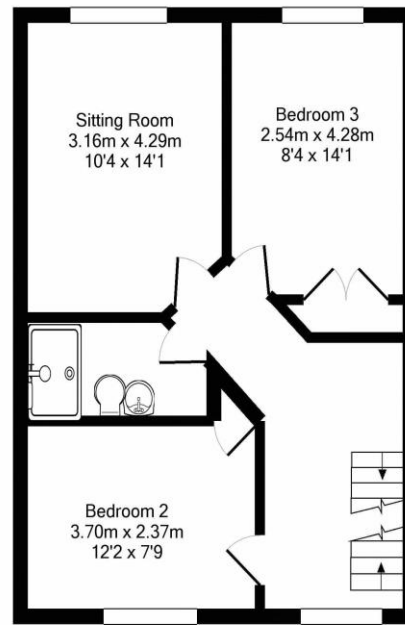




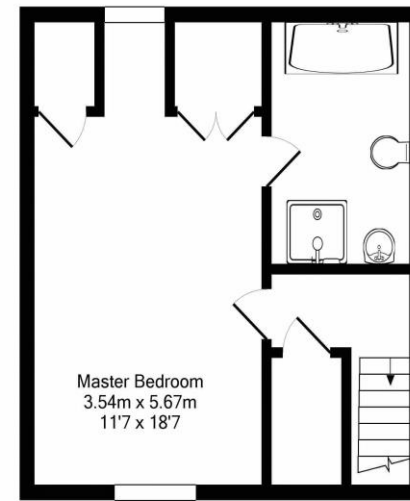




Ground Floor
Approx. Floor
Area 52.2 Sq.M.
(562 Sq.Ft.)



1st Floor
Approx. Floor
Area 48.3 Sq.M.
(520 Sq.Ft.)



SECOND FLOOR
Approx. Floor
Area 38.6 Sq.M.
(415 Sq.Ft.)

Total Approx. Floor Area 139.1 Sq.M. (1497 Sq.Ft.)

Whilst every attempt has been made to ensure the accuracy of the floor plan contained here, measurements of doors, windows, rooms and any other items are approximate and no responsibility is taken for any error, omission, or mis-statement. This plan is for illustrative purposes only and should be used as such by any prospective purchaser. The services, systems and appliances shown have not been tested and no guarantee as to their operability or efficiency can be given
Made with Metropix ©2017

All enquiries to our Alnwick Office | 31 - 33 Bondgate Within, Alnwick, Northumberland NE66 1SX

T: 01665 600 170 | www.sandersonyoung.co.uk

