



The Schoolhouse
Kirkley





The Schoolhouse, Kirkley, Ponteland, Newcastle upon Tyne NE20 0BA

Guide Price £699,500

The Schoolhouse is a beautiful period detached house, circa 1861, occupying a mature garden and grounds of approx. 0.4 acres, with extensive driveway, a detached double garage and stabling/outbuildings. The stunning five bedroom home, lived in by the current owners since 1997, has been greatly improved and sympathetically refurbished with stylish newly fitted (2017) master ensuite bathroom and shower room and a hand painted kitchen/breakfast room with integrated appliances. The former school house has many period and traditional features including an oak entrance portico, stunning feature arched window to the drawing room, beams to the dining room ceiling and stone quoins to the windows.

Hallway | Cloakroom/wc | Dining hallway | Library/study | Conservatory | Garden room | Drawing room
Kitchen/breakfast room | Utility and boiler room | First floor | Master bedroom suite: double bedroom, fitted dressing room, newly fitted ensuite bathroom/wc | Three further first floor bedrooms
Newly fitted shower/wc | Second floor loft bedroom Magnificent private mature gardens
Double detached garage and driveway.

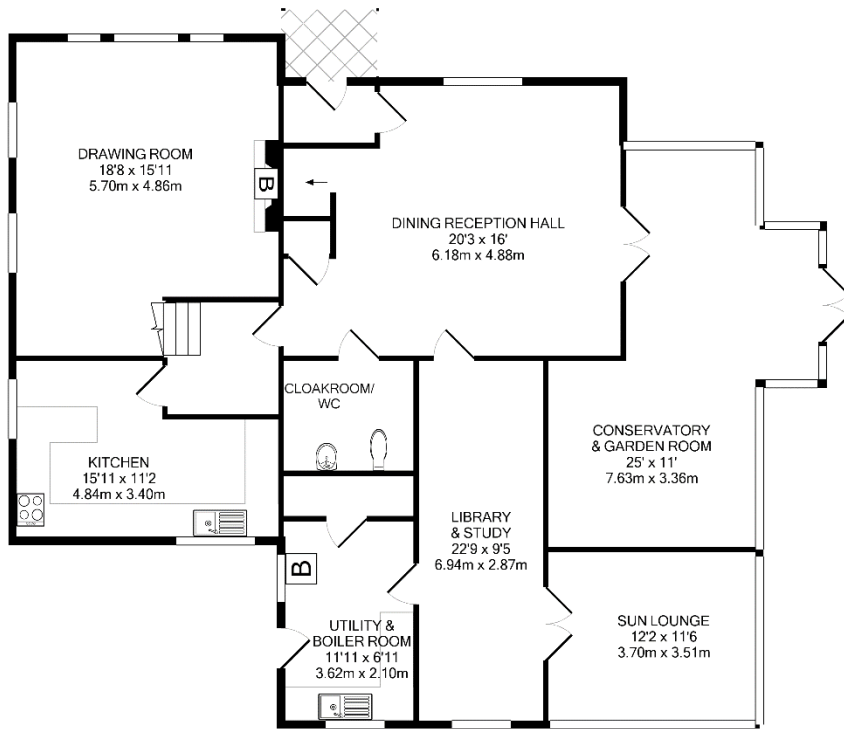
Services: mains electricity & water | Tenure: Freehold | Council tax: Band E | EPC Rating: E



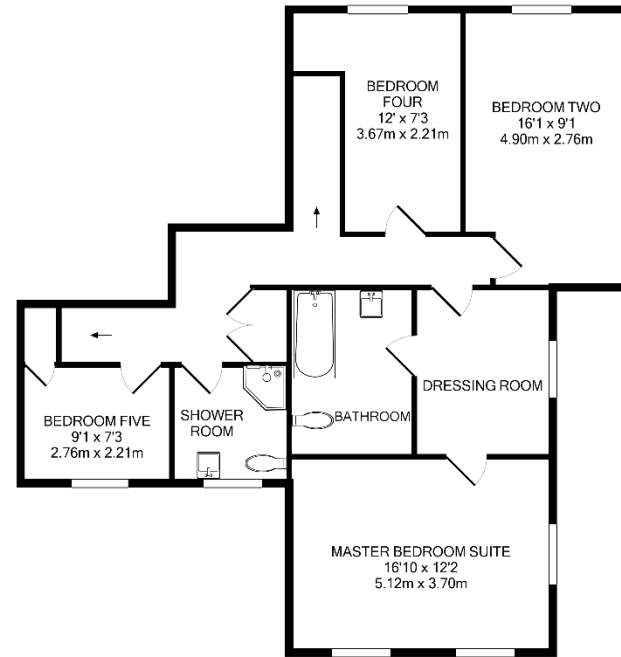






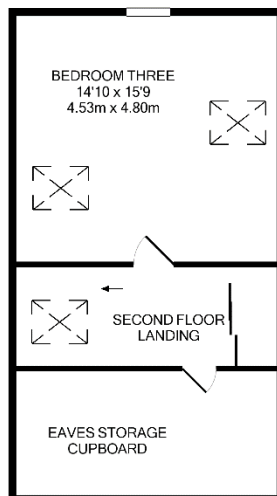


GROUND FLOOR



1ST FLOOR

Whilst every attempt has been made to ensure the accuracy of the floor plan contained here, measurements of doors, windows, rooms and any other items are approximate and no responsibility is taken for any error, omission, or mis-statement. This plan is for illustrative purposes only and should be used as such by any prospective purchaser. The services, systems and appliances shown have not been tested and no guarantee as to their operability or efficiency can be given.
Made with Metropix ©2015



2ND FLOOR



All enquiries to our Ponteland Office | Coates Institute, Main Street, Ponteland, Newcastle upon Tyne NE20 9NH

T: 01661 823951 | www.sandersonyoung.co.uk

