



14 Hotspur Court
Alnwick





14 HOTSPUR COURT, ALNWICK, NORTHUMBERLAND, NE66 1PA

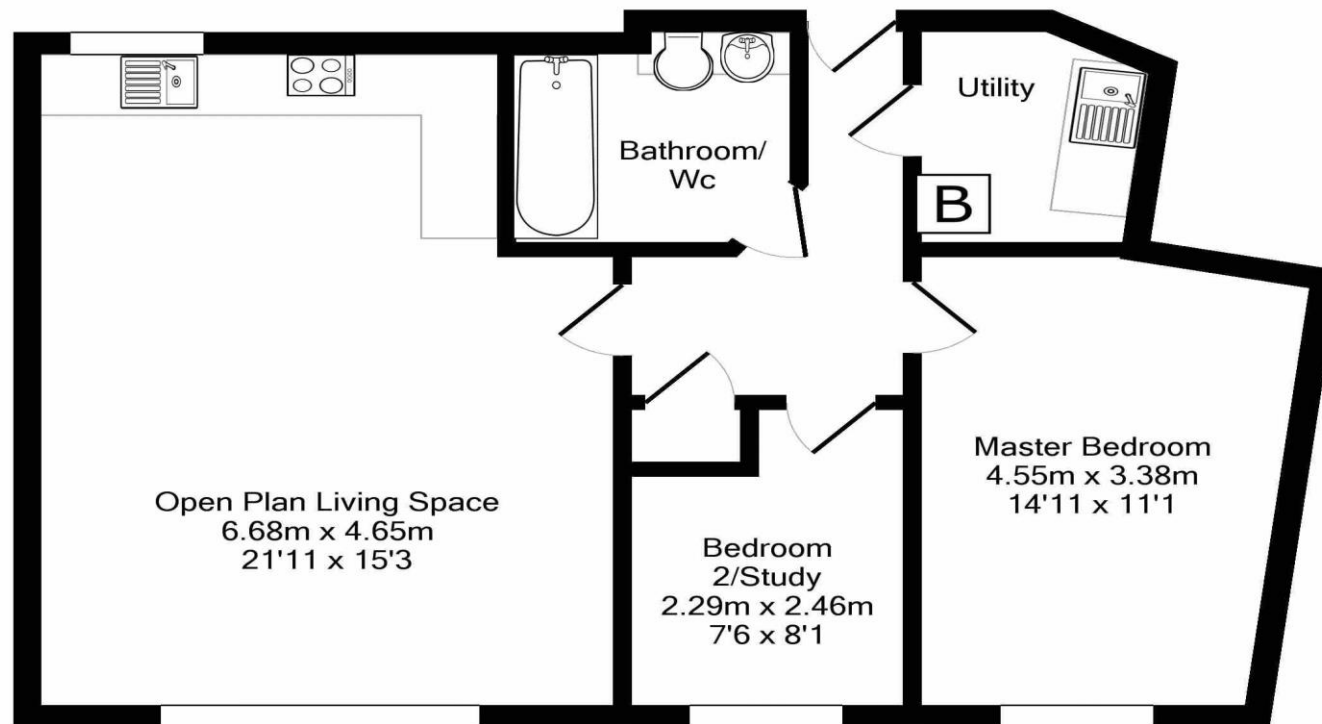
GUIDE PRICE £175,000

A beautifully presented two bedroom penthouse apartment, occupying an excellent position towards the rear of the building, within this popular residential development, in the centre of Alnwick town. The property enjoys a fabulous view west across the town towards Alnwick Castle and countryside beyond, and has excellent access to the numerous shops, restaurants and amenities the town has to offer, with Northumberland's Heritage coastline being just a few miles away making this an ideal property for those looking for either town living or a personal second home, and is ready to move into.

The property offers immaculate well-proportioned and contemporary accommodation, which is accessed via a secure communal entrance with both lift and staircase to the top floor and a private entrance door | Entrance hall | Utility room plumbed for automatic washing machine | Master bedroom with double glazed sash style windows | Second bedroom/study | Bathroom/wc including over-bath shower with screen and vanity unit with storage housing wash hand basin and wc | Attractive open plan reception space incorporating generous lounge area with sash style window giving views of Alnwick Castle | Lounge area is open plan to the kitchen/dining area. The kitchen is fitted with a quality range of units and integrated appliances including gas hob, electric oven, dishwasher, fridge/freezer and microwave | Externally, within the rear enclosed courtyard there is a single allocated parking space.

Services: Mains electricity, gas, water and drainage with gas central heating | Tenure: Leasehold on a 999 years lease with a peppercorn ground rent and approx. £1,244 maintenance charge per annum | Council Tax Band: C | EPC Grade: B





Whilst every attempt has been made to ensure the accuracy of the floor plan contained here, measurements of doors, windows, rooms and any other items are approximate and no responsibility is taken for any error, omission, or mis-statement. This plan is for illustrative purposes only and should be used as such by any prospective purchaser. The services, systems and appliances shown have not been tested and no guarantee as to their operability or efficiency can be given
Made with Metropix ©2018

All enquiries to our Alnwick Office | 31 - 33 Bondgate Within, Alnwick, Northumberland NE66 1SX

T: 01665 600 170 | www.sandersonyoung.co.uk

